

FOR LEASE

SUPER 8 BUSINESS CENTRE

26 Strathmoor Drive, Sherwood Park, AB



HIGHLIGHTS

- 810 sq ft ± office space available
- Common washrooms for smaller offices
- Excellent access to Broadmoor Blvd, Yellowhead Hwy and Anthony Henday

JOEL WOLSKI

Director, Associate

C 780.904.5630

joel@royalparkrealty.com

SCOTT ENDRES

Partner, Broker

C 780.720.6541

scott@royalparkrealty.com



ROYAL PARK
REALTY™

T 780.448.0800 F 780.426.3007
#201, 9083 51 Avenue NW Edmonton, AB T6E 5X4

royalparkrealty.com

For Lease | Unit 3, 26 Strathmoor Drive, Sherwood Park, AB



Property Details & Financials

MUNICIPAL ADDRESS	26 Strathmoor Drive, Sherwood Park, AB
LEGAL DESCRIPTION	Plan: 0123559; Block: 1; Lot: 18
ZONING	HC (Highway Commercial)
TYPE OF SPACE	Retail/Office
UNIT 3 (OFFICE)	810 sq ft ±
PARKING	Ample
LEASE RATE	\$1,500.00 gross/month
POSSESSION	Immediate



ROYAL PARK
REALTY™

T 780.448.0800 F 780.426.3007
#201, 9083 51 Avenue NW Edmonton, AB T6E 5X4

royalparkrealty.com

For Lease | Unit 3, 26 Strathmoor Drive, Sherwood Park, AB



SMITTY'S RESTAURANT



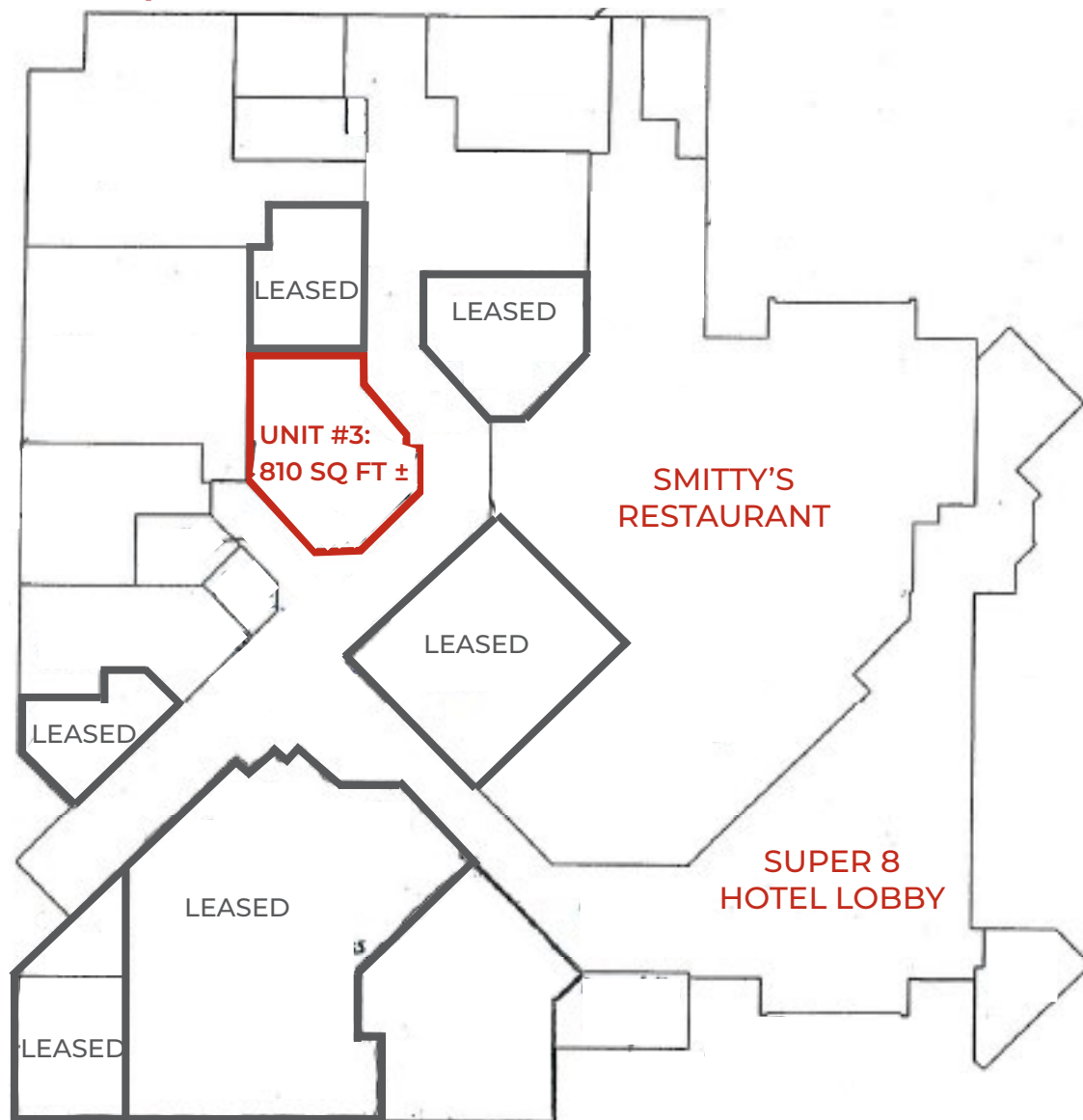
**ROYAL PARK
REALTY™**

T 780.448.0800 F 780.426.3007
#201, 9083 51 Avenue NW Edmonton, AB T6E 5X4

royalparkrealty.com

The information contained herein is believed to be correct, however does not form part of any future contract. The offering may be withdrawn at any time without notice or cause.

Floor Plan | Unit 3, 26 Strathmoor Drive, Sherwood Park, AB



Quality Based on **Results**, Not **Promises**.



JOEL WOLSKI

Director, Associate

C 780.904.5630

joel@royalparkrealty.com



SCOTT ENDRES

Partner, Broker

C 780.720.6541

scott@royalparkrealty.com



ROYAL PARK
REALTY™

T 780.448.0800 F 780.426.3007
#201, 9083 51 Avenue NW Edmonton, AB T6E 5X4

royalparkrealty.com