

FOR SALE

154 - 315 ACRES (+/-) AGRICULTURE LAND

Township Road 560 & Range Road 205, Strathcona County



HIGHLIGHTS

- 154 - 315 Acres (+/-) agriculture land located near Bruderheim
- 160 Acre parcel has existing homestead
- 154 Acre parcel has surface lease income
- CN rail running through land
- Parcels can be purchased separately

CONTACT

ERIC STANG

Director, Associate

T 780.423.7585

C 780.667.9605

eric@royalparkrealty.com

SCOTT ENDRES

Director, Associate

T 780.423.7588

C 780.720.6541

scott@royalparkrealty.com

JOEL WOLSKI

Director, Associate

T 780.423.7599

C 780.904.5630

joel@royalparkrealty.com

JOANNA LEWIS

Associate

T 780.423.7580

C 780.999.9642

joanna@royalparkrealty.com

TYLER WEIMAN

Associate

T 780.423.7578

C 780.995.0028

tyler@royalparkrealty.com



**ROYAL PARK
REALTY™**

T 780.448.0800 F 780.426.3007
6940 - 76 Avenue NW Edmonton, AB T6B 2R2

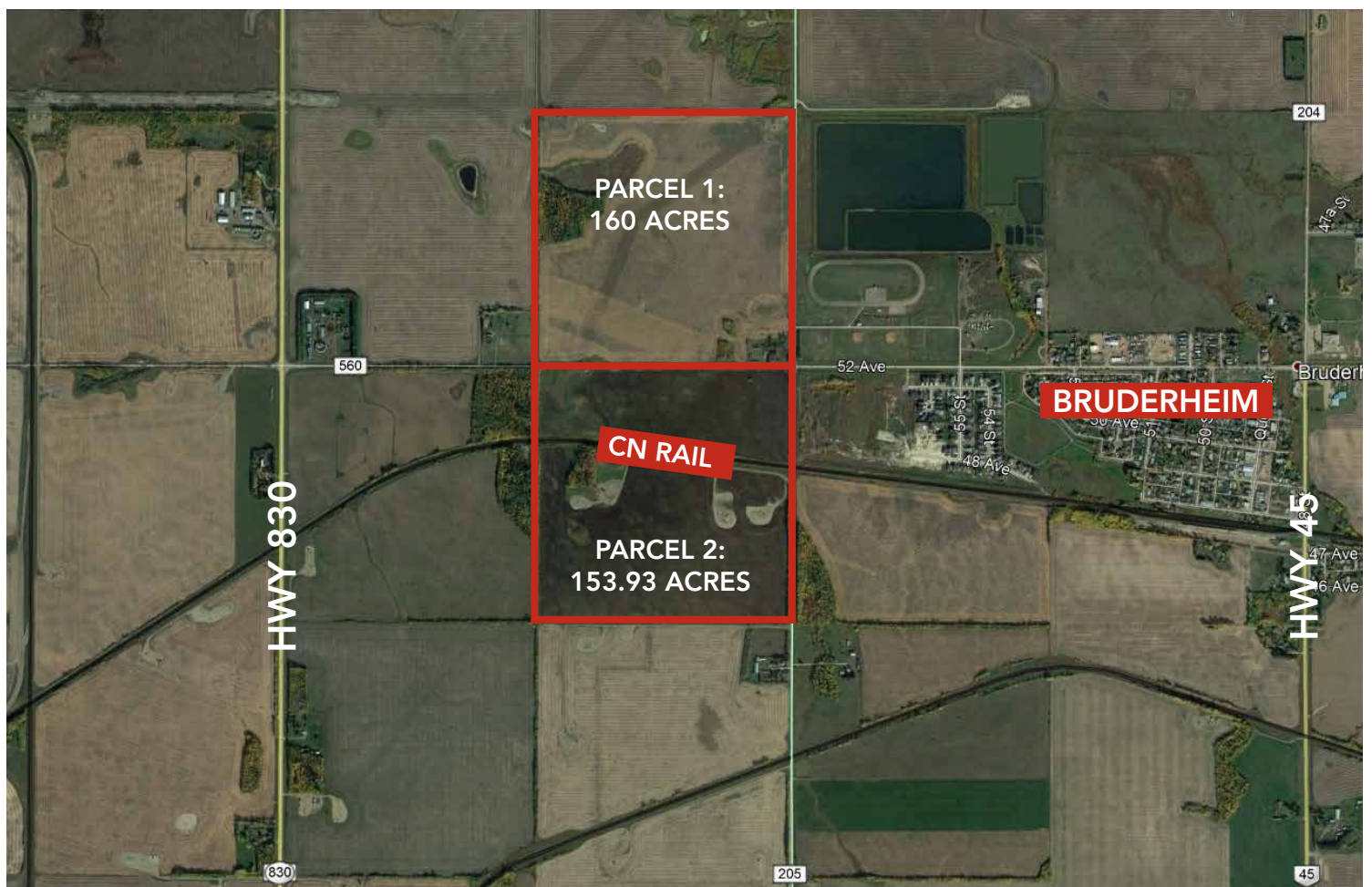
royalparkrealty.com

PROPERTY DETAILS

MUNICIPAL ADDRESS	Township Road 560 & Range Road 205, Strathcona County
LEGAL DESCRIPTION	4; 20; 55; 31; NE 4; 20; 56; 6; SE
TYPE OF SPACE	Land
PARCEL 1	160 Acres (+/-)
PARCEL 2	153.93 Acres (+/-)
ZONING	AG (Agriculture General)
SALE PRICE	Market
<u>TAXES (2018)</u>	
PARCEL 1	\$2,112.37
PARCEL 2	\$214.51



PROPERTY MAP



ROYAL PARK
REALTY™

T 780.448.0800 F 780.426.3007
6940 - 76 Avenue NW Edmonton, AB T6B 2R2

royalparkrealty.com