

FOR LEASE

119 STREET CHARACTER OFFICE SPACE

11302-119 Street NW, Edmonton, AB



HIGHLIGHTS

- 868 sq ft & 1,842 sq ft ± fully built out character office units
- Open high beam ceilings and exposed brick
- Each unit includes executive offices, boardroom, kitchenette and have a shared washroom
- Ideal for many professional users including accountant, lawyer, consulting firms, administrative and more
- Fronting 119 Street with excellent access to Kingsway Avenue, minutes from the downtown core



CONTACTS

JOEL WOLSKI

Director, Associate

T 780.423.7599

C 780.904.5630

joel@royalparkrealty.com

SCOTT ENDRES

Partner, Broker

T 780.423.7588

C 780.720.6541

scott@royalparkrealty.com



ROYAL PARK
REALTY™

T 780.448.0800 F 780.426.3007
#201, 9038-51 Avenue, Edmonton, AB T6E 5X4

royalparkrealty.com

FOR LEASE | Unit 6, 11302-119 Street NW, Edmonton, AB

MUNICIPAL ADDRESS	Unit 6, 11302-119 St NW, Edmonton, Alberta
LEGAL DESCRIPTION	Plan: 1743HW; Block: 193; Lot: B
ZONING	IM (Medium Industrial)
TYPE OF SPACE	Office
NEIGHBOURHOOD	Prince Rupert
UNIT 6	868 sq ft ±
PARKING	Additional parking available across the street

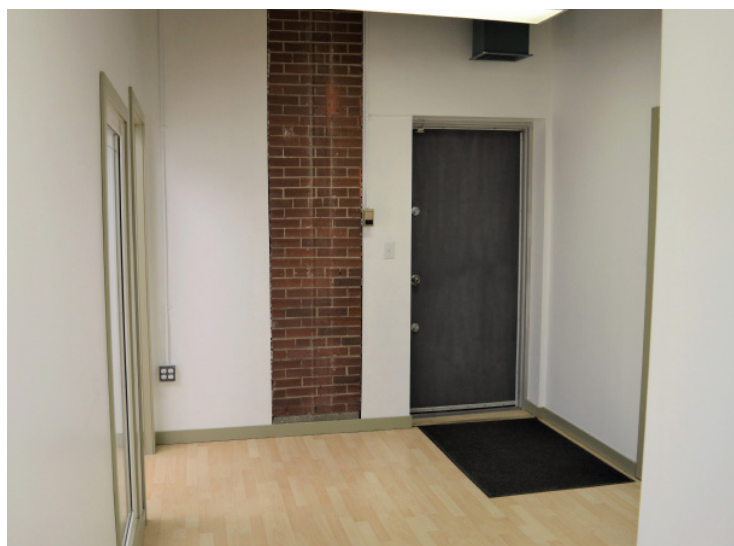
FINANCIALS

LEASE RATE	\$11.00/sq ft \$9.75/sq ft
OPERATING COSTS	\$10.50/sq ft (est. includes taxes, building insurance, property management and utilities)
TERM	Five (5) Years
POSSESSION	Immediate



ADDITIONAL HIGHLIGHTS

- **Unit 6** build out includes:
 - 3 offices
 - boardroom
 - kitchenette
 - shared washroom
- Move-in ready
- Separate exterior entrance
- Close proximity to numerous amenities



ROYAL PARK
REALTY™

T 780.448.0800 F 780.426.3007
#201, 9038-51 Avenue, Edmonton, AB T6E 5X4

royalparkrealty.com

FOR LEASE | Unit 102, 11302-119 Street NW, Edmonton, AB

MUNICIPAL ADDRESS	Unit 102, 11302-119 St NW, Edmonton, Alberta
LEGAL DESCRIPTION	Plan: 1743HW; Block: 193; Lot: B
ZONING	IM (Medium Industrial)
TYPE OF SPACE	Office
NEIGHBOURHOOD	Prince Rupert
UNIT 102	1,842 sq ft ±
PARKING	Additional parking available across the street

FINANCIALS

LEASE RATE	\$11.75/sq ft
OPERATING COSTS	\$10.50/sq ft (est. includes taxes, building insurance, property management and utilities)
TERM	Five (5) Years
POSSESSION	Immediate



ADDITIONAL HIGHLIGHTS

- **Unit 102** build out includes:
 - 5 offices
 - boardroom
 - kitchenette
 - shared washroom
- Move-in ready
- Separate exterior entrance
- Close proximity to numerous amenities



ROYAL PARK
REALTY™

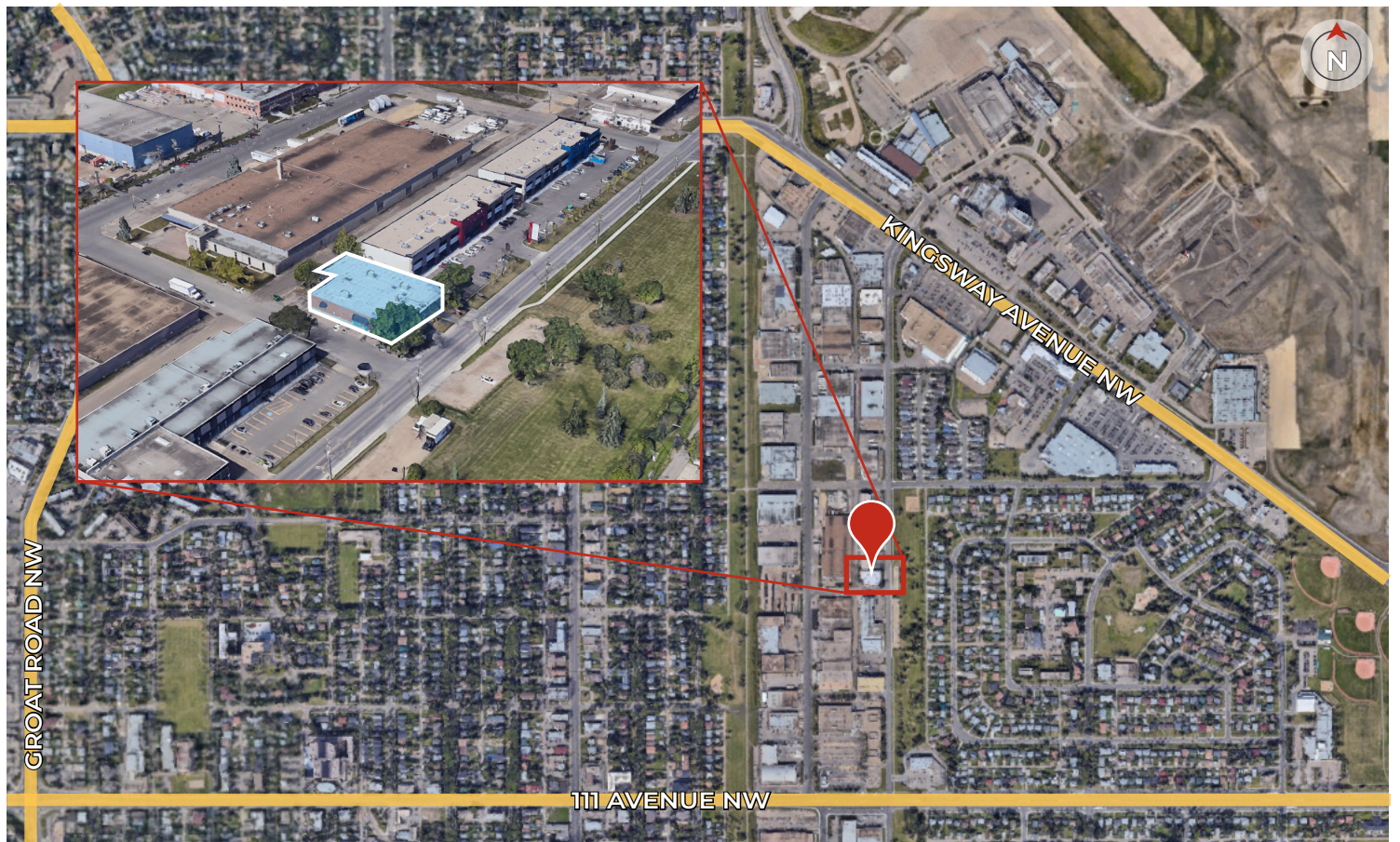
T 780.448.0800 F 780.426.3007
#201, 9038-51 Avenue, Edmonton, AB T6E 5X4

royalparkrealty.com

FOR LEASE | Unit 102, 11302-119 Street NW, Edmonton, AB



PROPERTY LOCATION



ROYAL PARK
REALTY™

T 780.448.0800 F 780.426.3007
#201, 9038-51 Avenue, Edmonton, AB T6E 5X4

royalparkrealty.com



Quality Based on **Results**, Not **Promises**.

Contact Us For More Information

JOEL WOLSKI

Partner, Associate

T 780.423.7599

C 780.904.5630

joel@royalparkrealty.com

SCOTT ENDRES

Partner, Broker

T 780.423.7588

C 780.720.6541

scott@royalparkrealty.com



ROYAL PARK
REALTY™

T 780.448.0800 F 780.426.3007
#201, 9038-51 Avenue, Edmonton, AB T6E 5X4

royalparkrealty.com