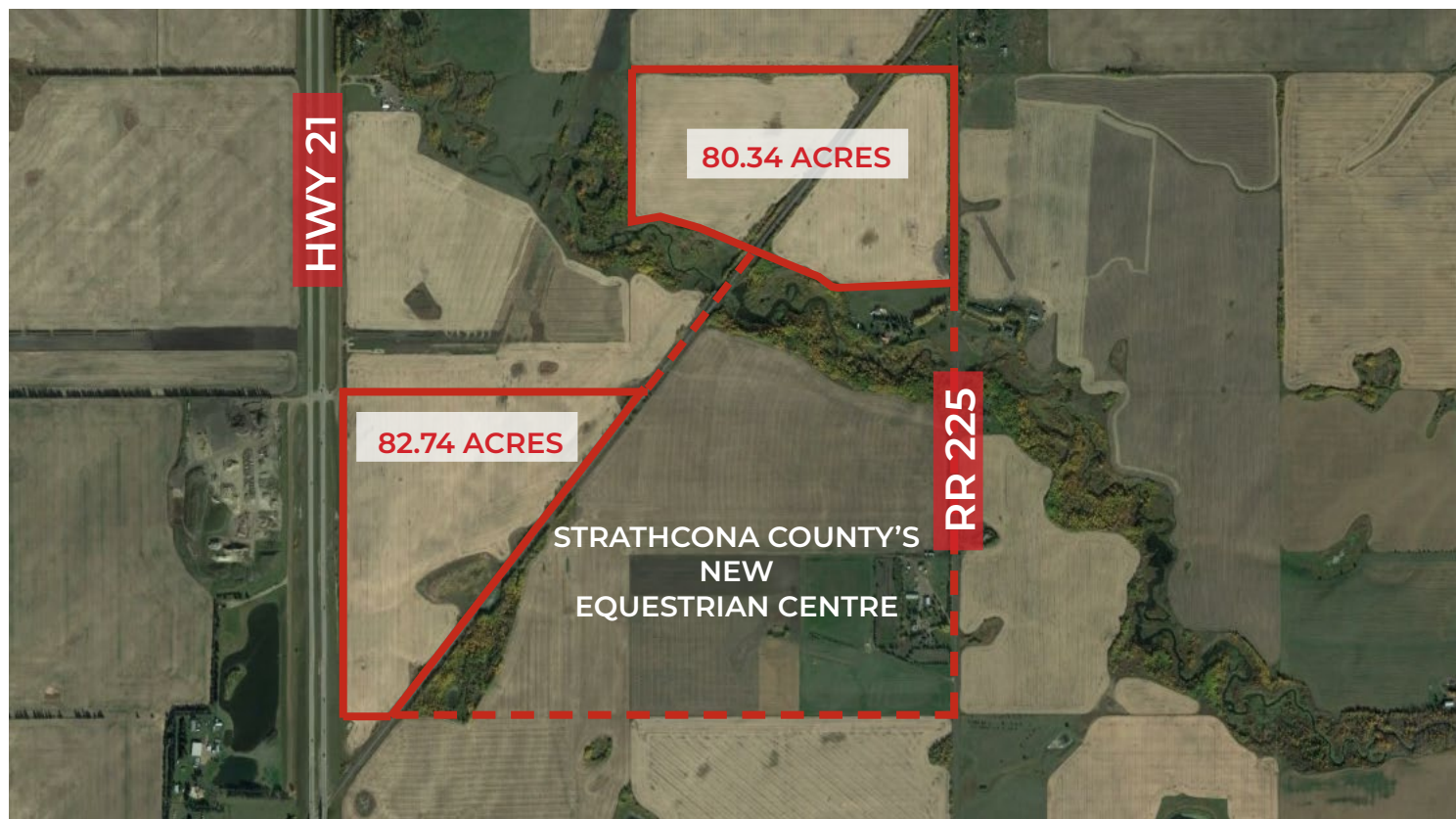


FOR SALE

80.34 - 163.08 ACRES

South of TWP 540, West of RR 225, Strathcona County, AB



HIGHLIGHTS

- 80.34 - 163.08 Acres ± agriculture land located in Strathcona County
- Fronting Highway 21
- Parcels can be purchased separately
- Minutes from Sherwood Park, Fort Saskatchewan and Edmonton
- Adjoining Bremner Growth Node
- Next to Strathcona County's new Equestrian Centre

CONTACTS

JOEL WOLSKI

Director, Associate

C 780.904.5630

T 780.423.7599

joel@royalparkrealty.com

SCOTT ENDRES

Partner, Broker

C 780.720.6541

T 780.423.7588

scott@royalparkrealty.com



ROYAL PARK
REALTY™

T 780.448.0800 F 780.426.3007
#201, 9038 51 Avenue NW Edmonton, AB T6E 5X4

royalparkrealty.com

PROPERTY DETAILS

MUNICIPAL ADDRESS	South of TWP 540, West of RR 225, Strathcona County
LEGAL DESCRIPTION	Portion of 4; 22; 53; 30; NW & 4; 22; 53; 31; SE
TYPE OF SPACE	Land
ZONING	AG (Agriculture)
LAND SIZE	80.34 - 163.08 Acres ±
POSSESSION	Immediate

ADDITIONAL INFO

- Located in Strathcona County
- Fronting Highway 21
- Parcels can be purchased separately
- Excellent access
- Land adjacent to Strathcona Equestrian Centre
- Scenic Pointe-Aux-Pins Creek adjacent to parcel

FINANCIALS

ASKING PRICE	Market
--------------	--------

PROPERTY LOCATION



ROYAL PARK
REALTY™

T 780.448.0800 F 780.426.3007
#201, 9038 51 Avenue NW Edmonton, AB T6E 5X4

royalparkrealty.com