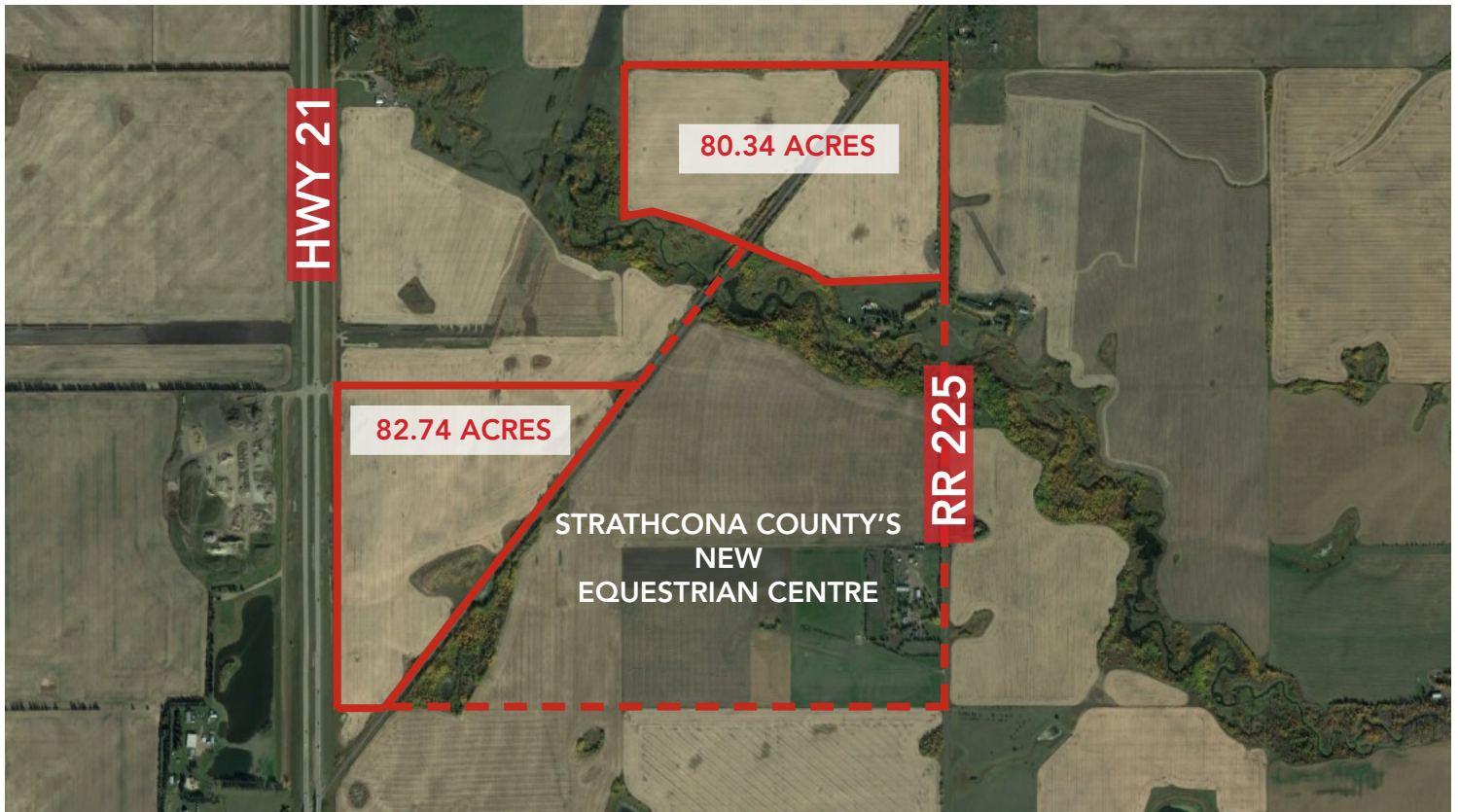


FOR SALE

80.34 - 163.08 ACRES

South of TWP 540, West of RR 225, Strathcona County, AB



HIGHLIGHTS

- 80.34 - 163.08 Acres (+/-) agriculture land located in Strathcona County
- Fronting Highway 21
- Parcels can be purchased separately
- Minutes from Sherwood Park, Fort Saskatchewan and Edmonton
- Adjoining Bremner Growth Node
- Next to Strathcona County's new Equestrian Centre

CONTACTS

JOEL WOLSKI

Director, Associate
T 780.423.7599
C 780.904.5630
joel@royalparkrealty.com

SCOTT ENDRES

Partner, Broker
T 780.423.7588
C 780.720.6541
scott@royalparkrealty.com



ROYAL PARK
REALTY™

T 780.448.0800 F 780.426.3007
#201, 9038 51 Avenue NW Edmonton, AB T6E 5X4

royalparkrealty.com

PROPERTY DETAILS

| | |
|-------------------|---|
| MUNICIPAL ADDRESS | South of TWP 540, West of RR 225, Strathcona County |
| LEGAL DESCRIPTION | Portion of 4; 22; 53; 30; NW & 4; 22; 53; 31; SE |
| TYPE OF SPACE | Land |
| ZONING | AG (Agriculture) |
| LAND SIZE | 80.34 - 163.08 Acres (+/-) |

ADDITIONAL INFO

- Located in Strathcona County
- Fronting Highway 21
- Parcels can be purchased separately
- Excellent access
- Minutes from Sherwood Park, Fort Saskatchewan and Edmonton
- Scenic Pointe-Aux-Pins Creek adjacent to parcel

FINANCIALS

| | |
|--------------|--------|
| ASKING PRICE | Market |
|--------------|--------|

PROPERTY LOCATION



ROYAL PARK
REALTY™

T 780.448.0800 F 780.426.3007
#201, 9038 51 Avenue NW Edmonton, AB T6E 5X4

royalparkrealty.com