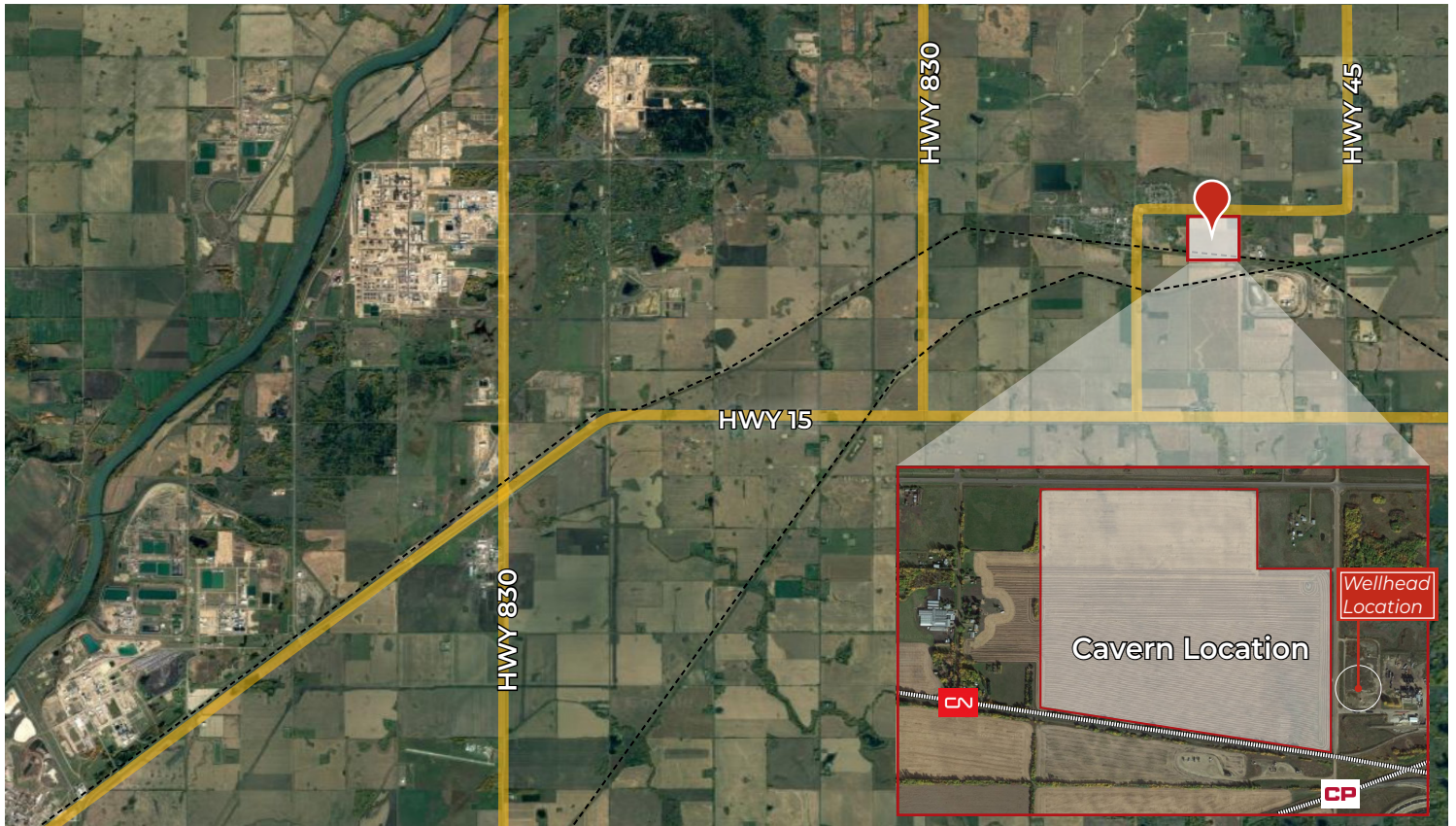


# CAVERN ASSET FOR SALE

## INDUSTRIAL HEARTLAND STORAGE CAVERN

Lamont County, AB



### HIGHLIGHTS

- Rare opportunity to purchase the mineral rights for a salt cavern in Alberta's Industrial Heartland
- Located minutes east of Bruderheim in Lamont County
- Close proximity to major infrastructure including pipelines, rail and utilities
- Strategically located with quick access to the High Load Corridor via Highways 15 & 831
- Surrounded by a variety of sectors including oil, gas, petrochemicals and advanced manufacturing

### CONTACTS

#### JOEL WOLSKI

Director, Associate

T 780.423.7599

C 780.904.5630

joel@royalparkrealty.com

#### SCOTT ENDRES

Partner, Broker

T 780.423.7588

C 780.720.6541

scott@royalparkrealty.com



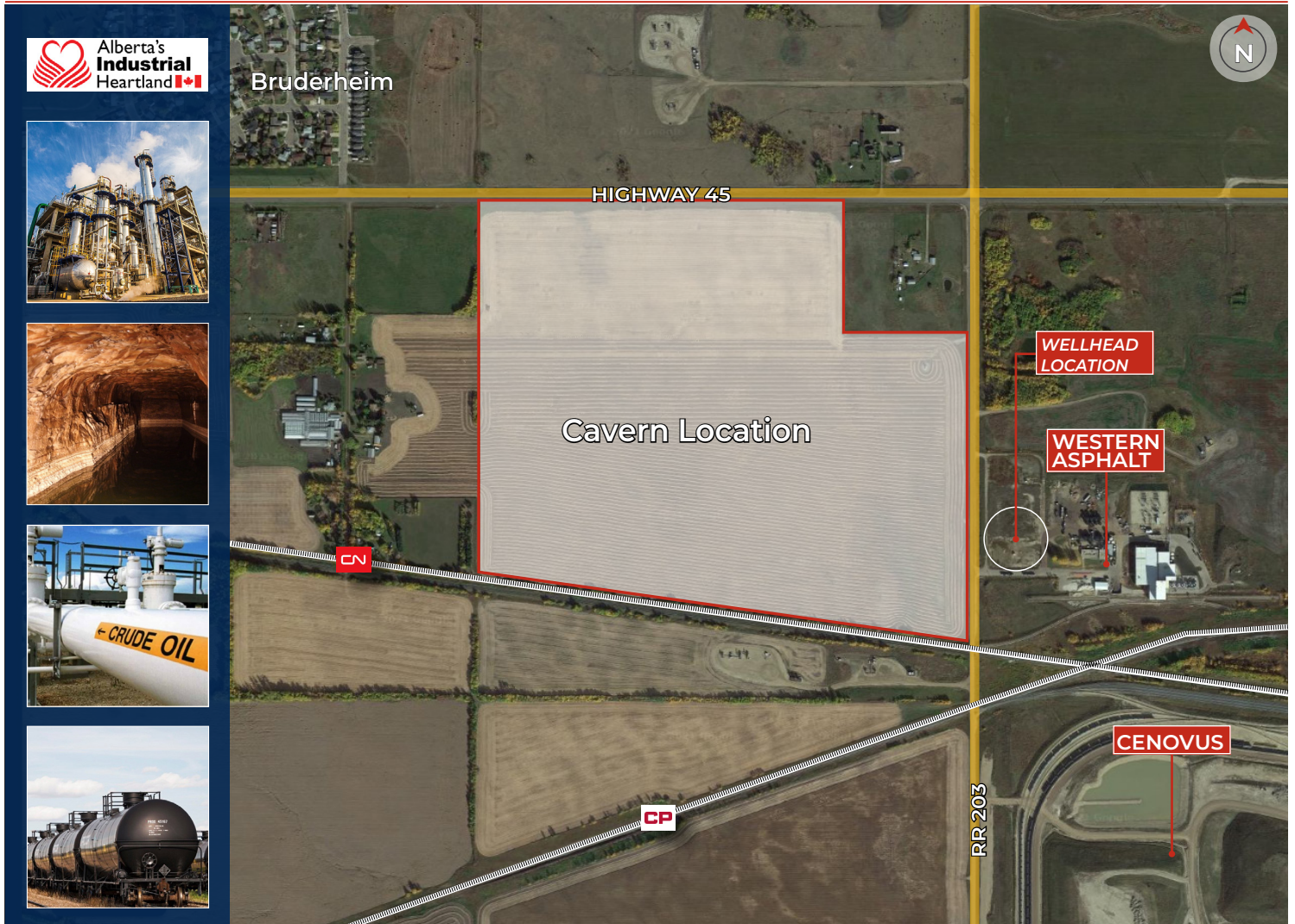
ROYAL PARK  
REALTY™

T 780.448.0800 F 780.426.3007  
#201, 9038 51 Ave NW Edmonton, AB T6E 5X4

royalparkrealty.com



# Overview | Cavern Asset Sale in Lamont County, Alberta



## Property Information & Financials

CAVERN LOCATION	Highway 45 & Range Road 203, Lamont County, Alberta
LEGAL DESCRIPTION	4; 20; 55; 33; NE
CAVERN SIZE	1.5 million barrels
SALE PRICE	<b>\$11,000,000.00</b>
NOTE	<i>Cavern assets means all Vendor's rights, titles and interest in the salt cavern. Wellhead location lease to be negotiated.</i>

## Salt Cavern Features

The subject asset provides an extremely rare opportunity. Salt cavern asset located minutes east of Bruderheim in Lamont County. The cavern has a 1.5 million barrel capacity. The cavern can be utilized for storage of oilfield waste & skim oil recovery, petroleum product storage or an outright sale.





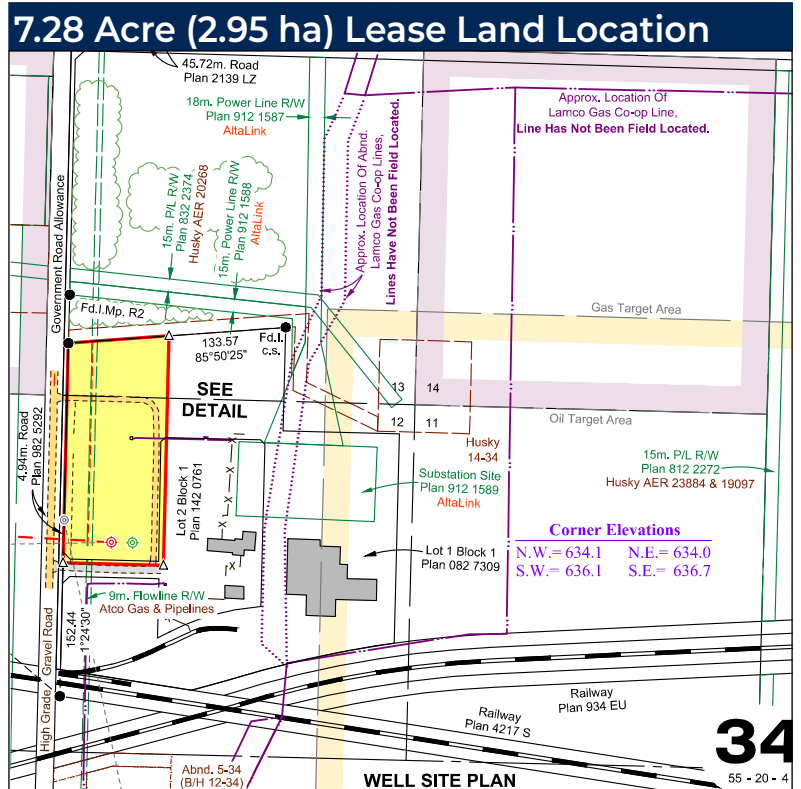
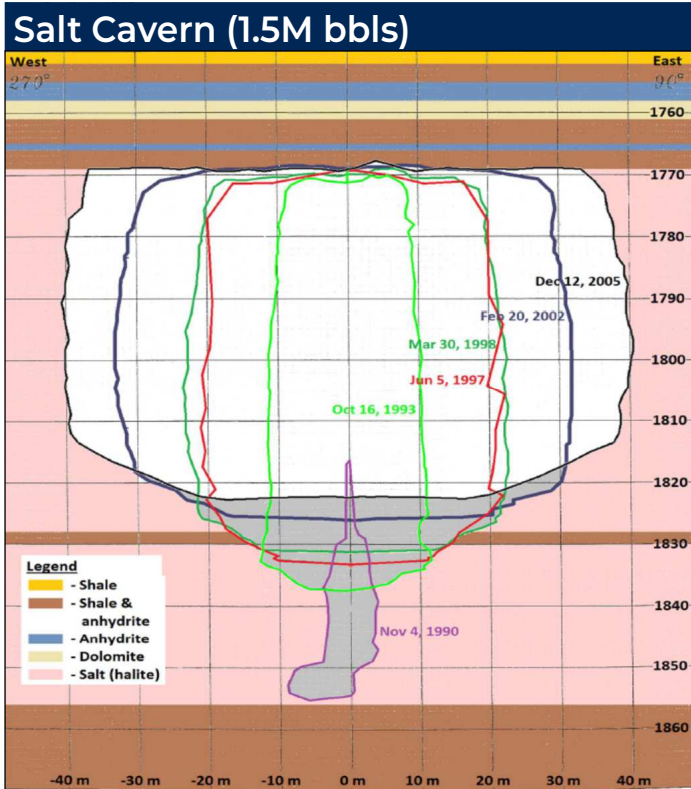
**ROYAL PARK  
REALTY™**

T 780.448.0800 F 780.426.3007  
#201, 9038 51 Ave NW Edmonton, AB T6E 5X4  
[royalparkrealty.com](http://royalparkrealty.com)

The information contained herein is believed to be correct, however does not form part of any future contract. The offering may be withdrawn at any time without notice or cause.



# Cavern Information | Cavern Asset Sale in Lamont County, Alberta



**ROYAL PARK REALTY™**

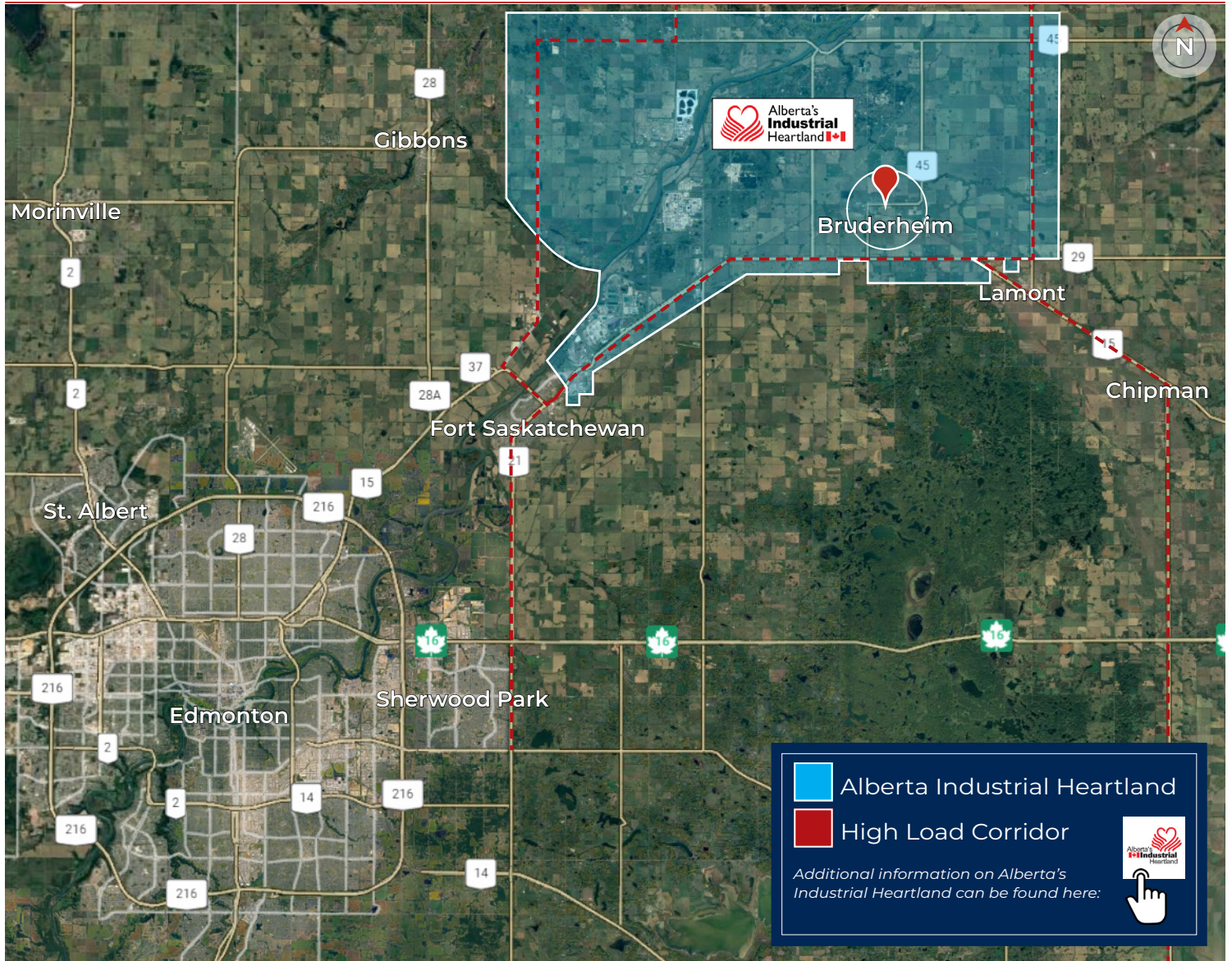
T 780.448.0800 F 780.426.3007  
#201, 9038 51 Ave NW Edmonton, AB T6E 5X4

royalparkrealty.com

The information contained herein is believed to be correct, however does not form part of any future contract. The offering may be withdrawn at any time without notice or cause.



# Regional Map | Cavern Asset Sale in Lamont County, Alberta



Quality Based on *Results*, Not *Promises*.

## Contact Us For More Information

### JOEL WOLSKI

Partner, Associate

T 780.423.7599

C 780.904.5630

joel@royalparkrealty.com

### SCOTT ENDRES

Partner, Broker

T 780.423.7588

C 780.720.6541

scott@royalparkrealty.com



ROYAL PARK  
REALTY™

T 780.448.0800 F 780.426.3007  
#201, 9038 51 Ave NW Edmonton, AB T6E 5X4

royalparkrealty.com