

# EMERALD PARK NORTH

## CONDOS AVAILABLE FOR SALE/LEASE

80%  
SOLD!

895/897 Pembina Road, Sherwood Park

Join retailers:

- Emerald Park Daycare
- Work Life Workwear
- Nest Family Counselling
- The Agency ... and more!

Another quality development by:

ERICKORP  
PROPERTIES  
LTD.

TAM  
DEVELOPMENTS  
LTD.



*Schedule a Site Tour Today!*

### SCOTT ENDRES

Partner, Broker

C 780.720.6541

T 780.423.7588

scott@royalparkrealty.com

### JOEL WOLSKI

Director, Associate

C 780.904.5630

T 780.423.7599

joel@royalparkrealty.com



ROYAL PARK  
REALTY™

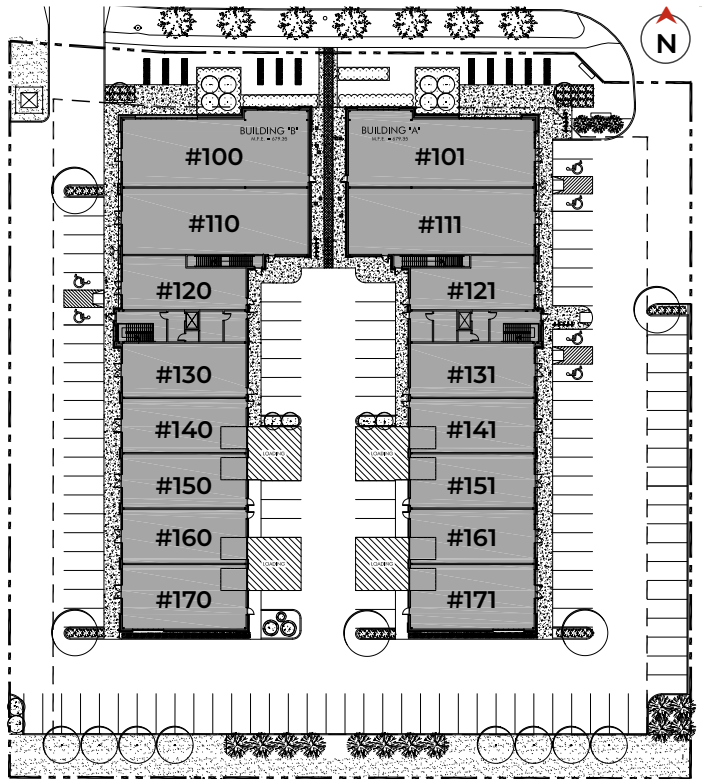
T 780.448.0800 F 780.426.3007  
#201, 9038 51 Avenue NW Edmonton, AB T6E 5X4

royalparkrealty.com





- Shell space ready for improvements
- Smaller units ideal for car storage
- Pylon signage opportunities
- Immediate possession
- Grade loading doors
- Rooftop patio



MUNICIPAL ADDRESS	895/897 Pembina Road, Sherwood Park
LEGAL DESCRIPTION	Condominium Plan: 2322788; Units: 1 - 21
ZONING	C2 (Arterial Commercial)
MAIN FLOOR	1,350 - 2,850 sq ft ±
2ND FLOOR	900 sq ft ± available
POSSESSION	Immediate
CONDO FEES	\$3.43/sq ft (2024 est.)
PROPERTY TAXES	\$5.00/sq ft (2024 est.)
PARKING	Scramble
SPRINKLERED	Yes
SIGNAGE	Pylon & Building Facade
LOADING	Grade

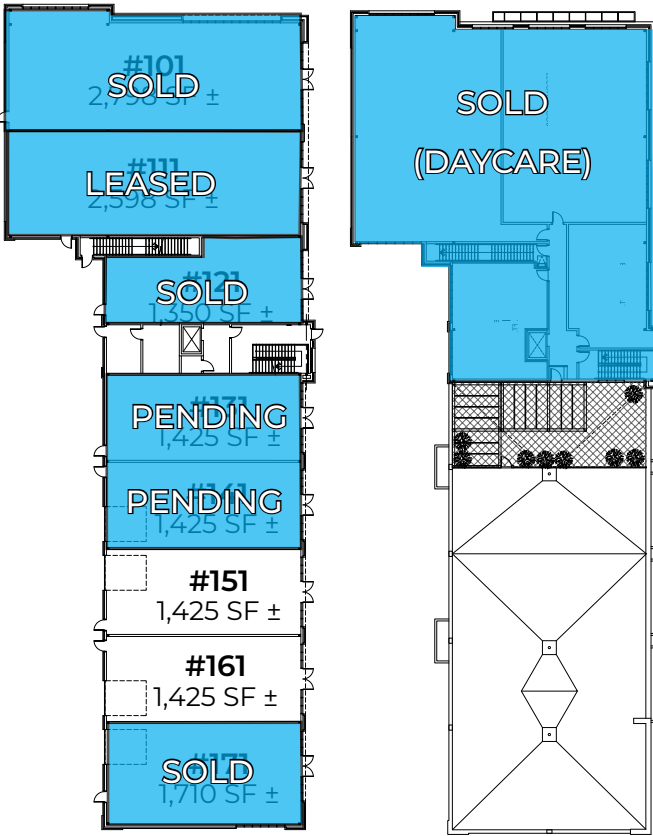
**ROYAL PARK REALTY™**

T 780.448.0800 F 780.426.3007  
 #201, 9038 51 Avenue NW Edmonton, AB T6E 5X4

[royalparkrealty.com](http://royalparkrealty.com)

The information contained herein is believed to be correct, however does not form part of any future contract. The offering may be withdrawn at any time without notice or cause.

### 897 Pembina Road - Main Floor



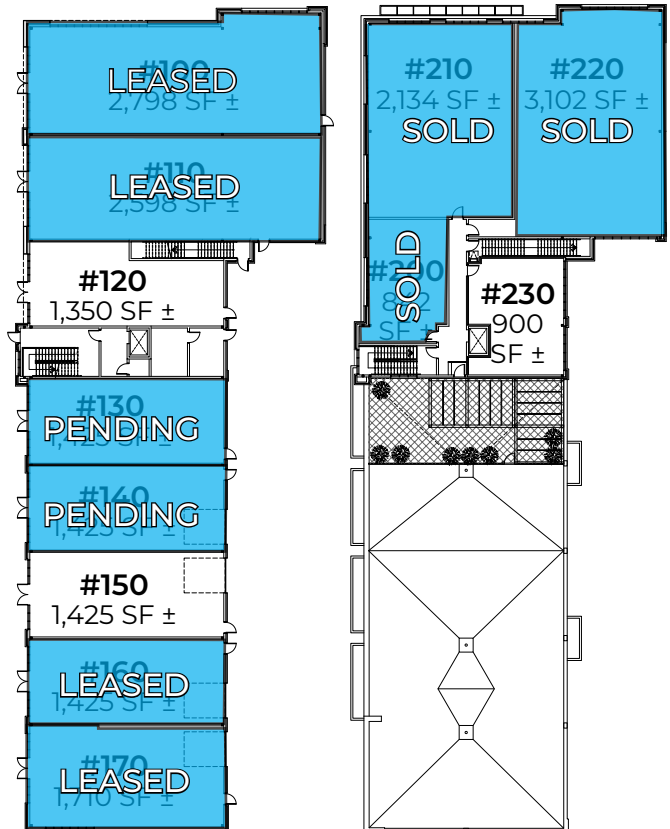
UNIT #	SIZE (SQ FT ±)	\$ PER SQ FT	LIST PRICE	LEASE RATE
101 (1)	2,798	\$389.	<b>SOLD</b> \$1,089,000	\$24.00/sq ft
111 (2)	2,598	\$381.	<b>LEASED</b> \$999,000	\$24.00/sq ft
121 (3)	1,350	\$369.	<b>SOLD</b> \$498,150	\$23.00/sq ft
131 (4)	1,425	\$371.23	<b>PENDING</b> \$529,000	\$23.00/sq ft
141 (5)	1,425	\$371.23	<b>PENDING</b> \$529,000	\$23.00/sq ft
151 (6)	1,425	\$371.23	\$529,000	\$23.00/sq ft
161 (7)	1,425	\$371.23	\$529,000	\$23.00/sq ft
171 (8)	1,710	\$367.8	<b>SOLD</b> \$629,000	\$23.00/sq ft

### 897 Pembina Road - Second Floor

UNIT #	SIZE (SQ FT ±)	\$ PER SQ FT	LIST PRICE	LEASE RATE
201 (9)	900	\$354.	<b>SOLD</b> \$319,000	\$22.00/sq ft
211 (9)	2,858	\$328.	<b>SOLD</b> \$939,000	\$20.00/sq ft
221 (9)	2,377	\$331.9	<b>SOLD</b> \$789,000	\$20.00/sq ft
231 (9)	842	\$355.1	<b>SOLD</b> \$299,000	\$22.00/sq ft

### 895 Pembina Road - Main Floor

UNIT #	SIZE (SQ FT ±)	\$ PER SQ FT	LIST PRICE	LEASE RATE
100 (10)	2,798	\$374.8	<b>LEASED</b> \$1,049,000	\$22.00/sq ft
110 (11)	2,598	\$374.8	<b>PENDING</b> \$969,000	\$22.00/sq ft
120 (12)	1,350	\$354.81	\$479,000	\$21.00/sq ft
130 (13)	1,425	\$354.81	<b>PENDING</b> \$509,000	\$19.00/sq ft
140 (14)	1,425	\$354.81	<b>PENDING</b> \$509,000	\$19.00/sq ft
150 (15)	1,425	\$357.19	\$509,000	\$19.00/sq ft
160 (16)	1,425	\$357.19	<b>LEASED</b> \$509,000	\$19.00/sq ft
170 (17)	1,710	\$359.1	<b>LEASED</b> \$609,000	\$19.00/sq ft



### 895 Pembina Road - Second Floor

UNIT #	SIZE (SQ FT ±)	\$ PER SQ FT	LIST PRICE	LEASE RATE
230 (18)	900	\$354.44	\$319,000	\$20.00/sq ft
220 (19)	3,102	\$307.	<b>SOLD</b> \$954,000	\$18.00/sq ft
210 (20)	2,134	\$327.1	<b>SOLD</b> \$699,000	\$18.00/sq ft
200 (21)	842	\$355.1	<b>SOLD</b> \$299,000	\$20.00/sq ft



ROYAL PARK  
REALTY™

T 780.448.0800 F 780.426.3007  
#201, 9038 51 Avenue NW Edmonton, AB T6E 5X4

royalparkrealty.com



**LOCATION**

Welcome to **Emerald Park North**, Sherwood Park's destination centre.

**Located**, just off Sherwood Drive, next to Emerald Hills with direct access to Emerald Drive. This area features newly developed hotels, retail, and residential. Direct access to Emerald Hills Shopping Centre. Quick access to Highway 16 & Anthony Henday.



**DRIVE TIMES**

- Yellowhead | 1 minute
- Anthony Henday | 5 minutes
- Highway 21 | 5 minutes
- Downtown Edmonton | 20 minutes

**AMENITIES NEARBY**

- Rona + | Canadian Tire
- Walmart Supercentre | Winners
- Sportchek | PetSmart
- Old Navy | Golf Town ... and more!



**ROYAL PARK REALTY™**

T 780.448.0800 F 780.426.3007  
#201, 9038 51 Avenue NW Edmonton, AB T6E 5X4

[royalparkrealty.com](http://royalparkrealty.com)



For Sale or Lease | Emerald Park North

895/897 Pembina Road, Sherwood Park

## DEMOGRAPHICS



98,381  
Population



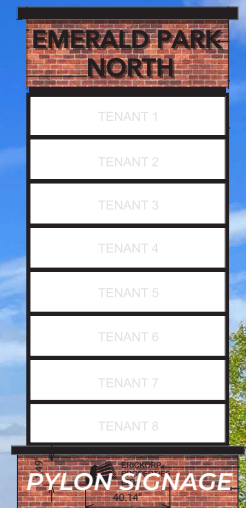
\$160,655  
Average Income



1.4 Million  
Market Area Pop'l



39  
Avg. Age



ROYAL PARK  
REALTY™

T 780.448.0800 F 780.426.3007  
#201, 9038 51 Avenue NW Edmonton, AB T6E 5X4

[royalparkrealty.com](http://royalparkrealty.com)



# Sherwood Park's Newest Commercial Development

## EMERALD PARK NORTH

895/897 Pembina Road, Sherwood Park



Another quality development by:



ERICKORP  
PROPERTIES  
LTD.

TAM  
DEVELOPMENTS

### NOW SEEKING:

- Retail stores
- Hair salons, nail salons
- Lawyers, accountants
- Liquor store
- Doctors, optometrists
- Massage, acupuncture, physio
- Bars, pubs & cocktail lounges
- Restaurants & coffee shops
- Veterinary clinic ... and more!

Register your interest by contacting:



#### SCOTT ENDRES

Partner, Broker

780.720.6541

scott@royalparkrealty.com

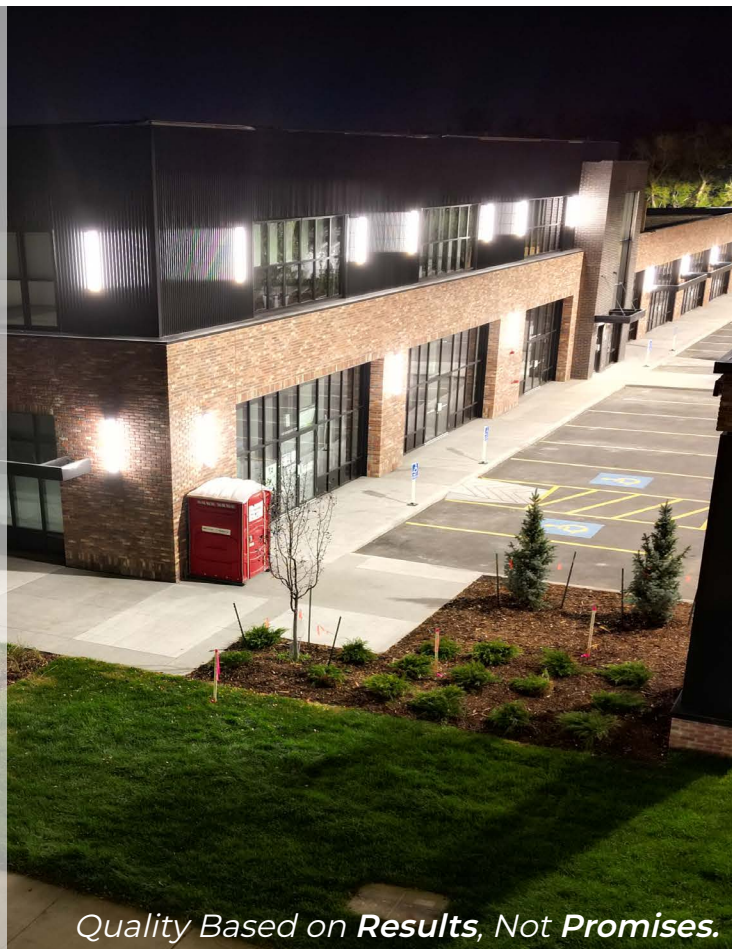


#### JOEL WOLSKI

Director, Associate

780.904.5630

joel@royalparkrealty.com



Quality Based on **Results**, Not **Promises**.



ROYAL PARK  
REALTY™

T 780.448.0800 F 780.426.3007  
#201, 9038 51 Avenue NW Edmonton, AB T6E 5X4

royalparkrealty.com