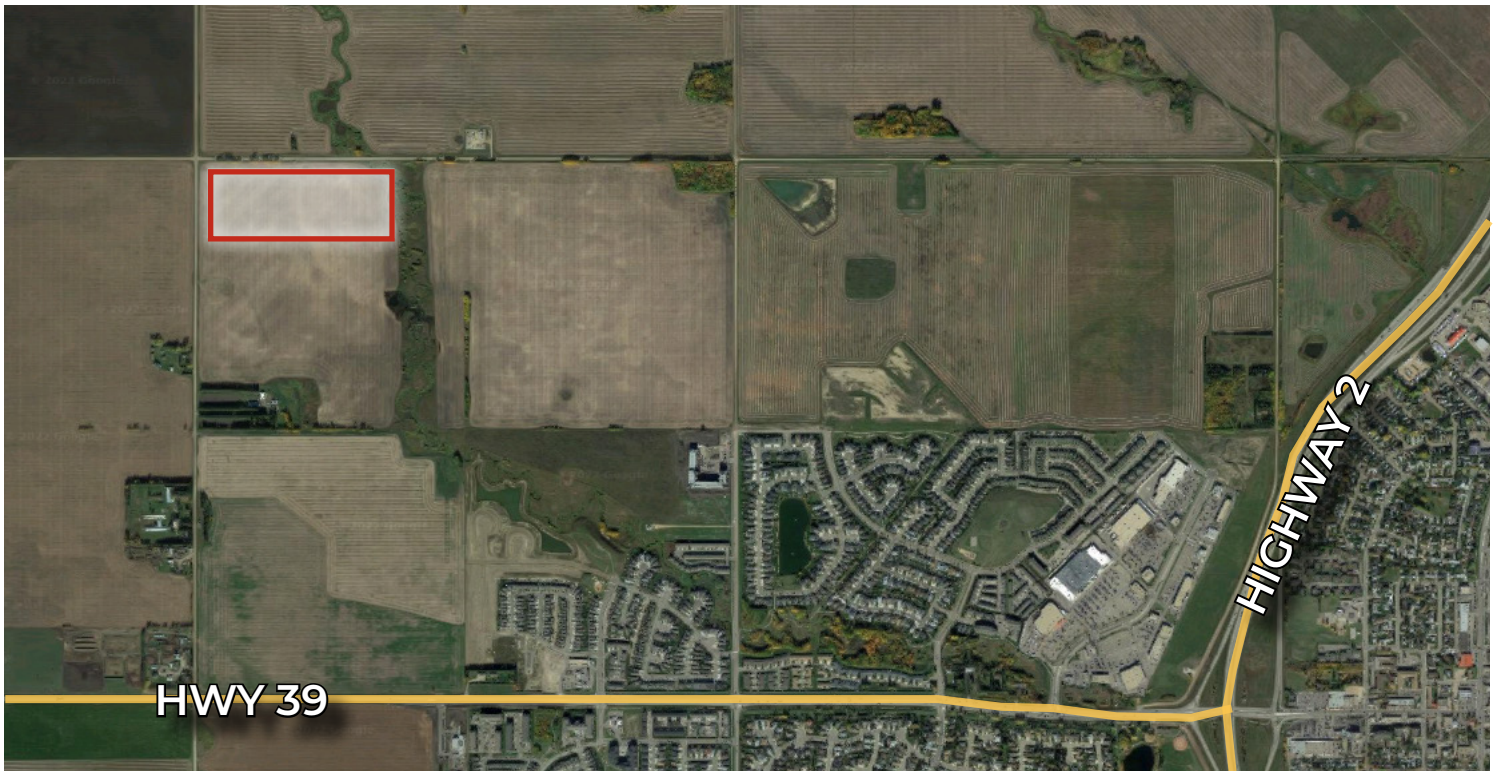


FOR SALE

BUSINESS/LIGHT INDUSTRIAL LOTS IN LEDUC

65 Avenue & 74 Street, Leduc, AB



HIGHLIGHTS

- 1 – 10 acre ± industrial lots available Fall 2023
- Full municipal services to the property line
- Supports a wide variety of industrial uses
- Excellent access to transportation routes

CONTACTS

JOEL WOLSKI

Director, Associate

T 780.423.7599

C 780.904.5630

joel@royalparkrealty.com

SCOTT ENDRES

Partner, Broker

T 780.423.7588

C 780.720.6541

scott@royalparkrealty.com



ROYAL PARK
REALTY™

T 780.448.0800 F 780.426.3007
#201, 9038 51 Avenue NW Edmonton, AB T6E 5X4

royalparkrealty.com

PROPERTY LOCATION 65 Avenue & 74 Street, Leduc, AB



PROPERTY DETAILS

MUNICIPAL ADDRESS	65 Avenue & 74 Street, Leduc, Alberta
LEGAL DESCRIPTION	4; 25; 49; 33; NW
CURRENT ZONING	UR (Urban Reserve)
FUTURE ZONING	Business Employment / Light Industrial

FINANCIALS

SALE PRICE	\$395,000/per acre
POSSESSION	Fall 2023

Additional Information:

- Fully serviced industrial development land
- Titled lots available Fall 2023
- Lots will be delivered with full municipal services and rough graded



ROYAL PARK
REALTY™

T 780.448.0800 F 780.426.3007
#201, 9038 51 Avenue NW Edmonton, AB T6E 5X4

royalparkrealty.com