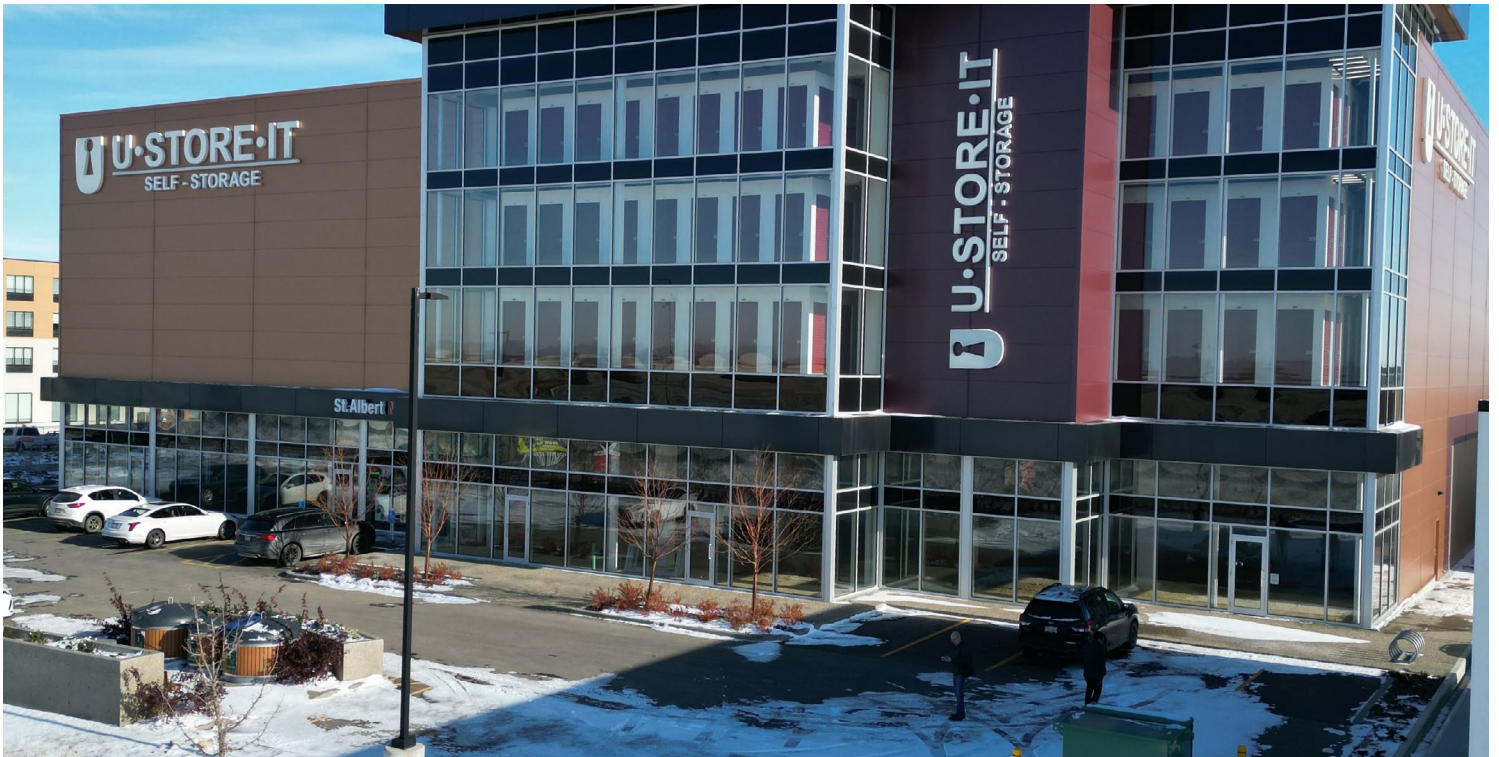


FOR LEASE

MAIN FLOOR COMMERCIAL UNITS

1135 St. Albert Trail, St. Albert, AB



HIGHLIGHTS

- 1,000 – 5,160 sq ft ± main floor available
- Shell space ready for fixturing
- Located in the northern district of St. Albert along St. Albert Trail
- Excellent exposure and access to major thoroughfares

CONTACTS

JOEL WOLSKI

Director, Associate

T 780.423.7599

C 780.904.5630

joel@royalparkrealty.com

SCOTT ENDRES

Partner, Broker

T 780.423.7588

C 780.720.6541

scott@royalparkrealty.com

JOANNA LEWIS

Associate

T 780.423.7580

C 780.999.9642

joanna@royalparkrealty.com



ROYAL PARK
REALTY™

T 780.448.0800 F 780.426.3007
#201, 9038 -51 Avenue NW Edmonton, AB T6E 5X4

royalparkrealty.com

Main Floor Units For Lease | 1135 St. Albert Trail, St. Albert, AB



Financial Information:

Lease Rate:	\$27.50/sq ft
Op Costs:	\$12.50/sq ft (2024)
Possession:	Immediate

Property Information

MUNICIPAL ADDRESS	1135 St. Albert Trail, St. Albert, AB
LEGAL DESCRIPTION	Plan: 1720385; Block: 1; Lot: 5
ZONING	CC (Corridor Commercial)
VACANCY	1,000 - 5,160 sq ft ±
PARKING	28 dedicated stalls

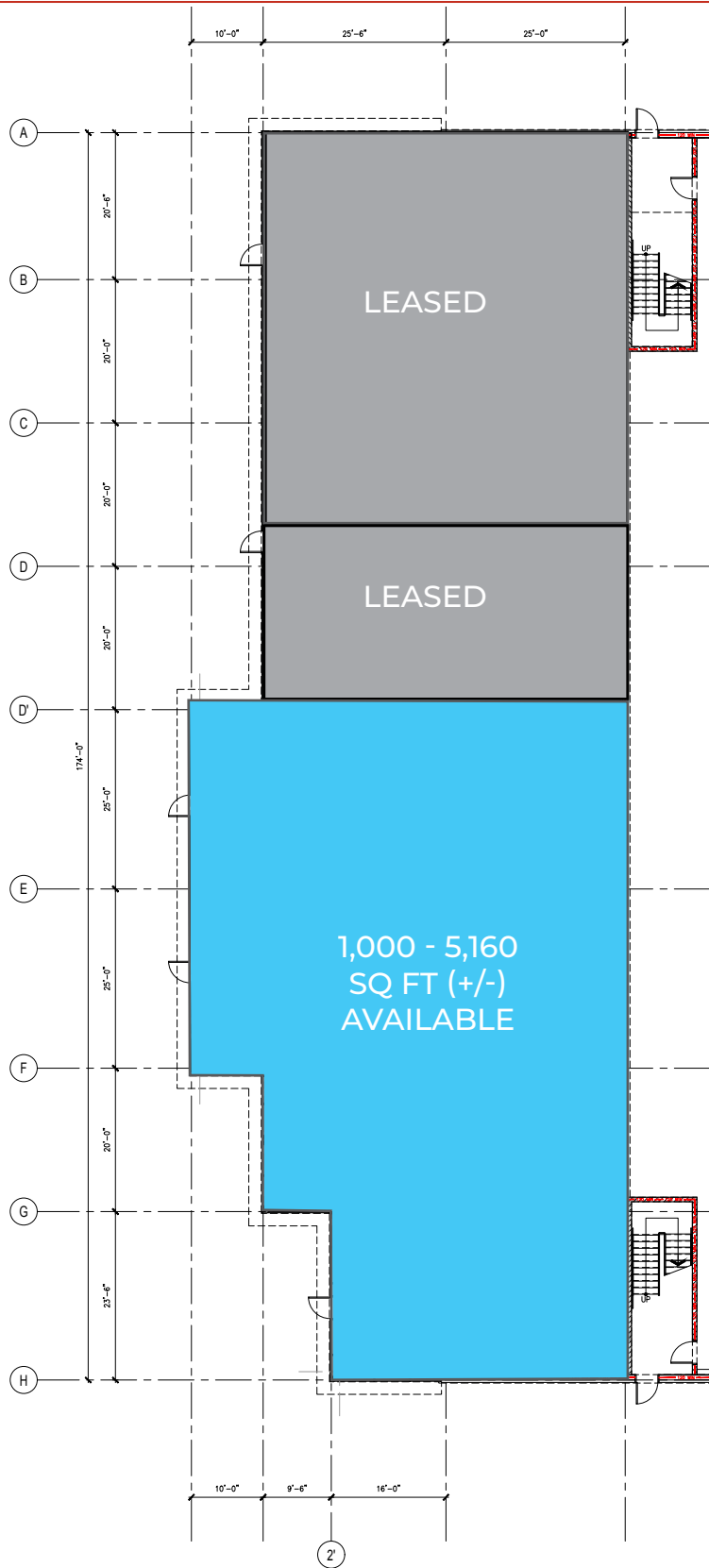


ROYAL PARK
REALTY™

T 780.448.0800 F 780.426.3007
#201, 9038 -51 Avenue NW Edmonton, AB T6E 5X4

royalparkrealty.com

Main Floor Units For Lease | 1135 St. Albert Trail, St. Albert, AB

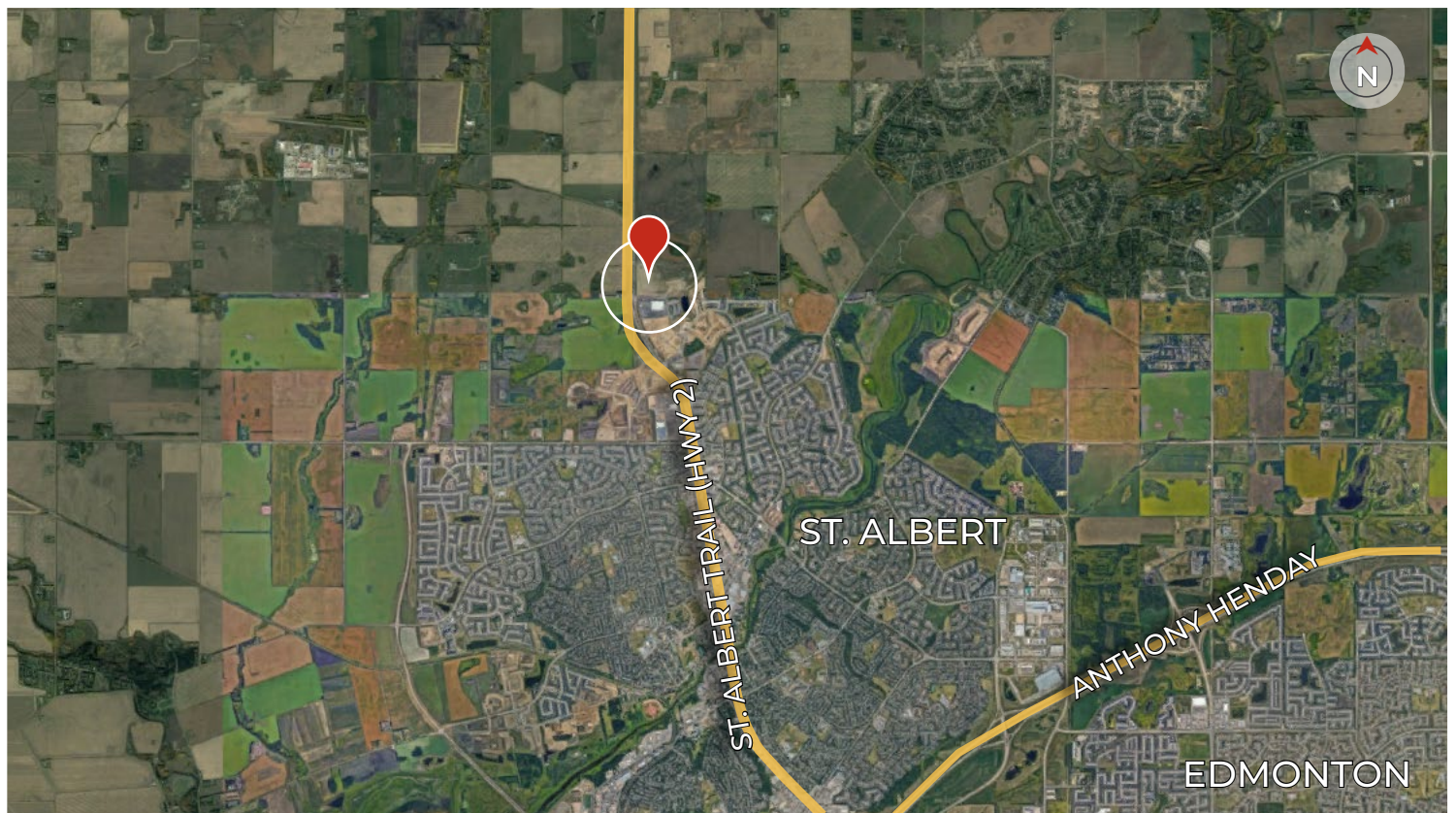


**ROYAL PARK
REALTY™**

T 780.448.0800 F 780.426.3007
#201, 9038 -51 Avenue NW Edmonton, AB T6E 5X4

royalparkrealty.com

Main Floor Units For Lease | 1135 St. Albert Trail, St. Albert, AB



St. Albert Demographics



30,000
VEHICLES PER
DAY



AMPLE
PARKING
ON-SITE



EXCELLENT
ACCESS



42
AVERAGE
AGE



68,232
POPULATION



\$119,905
AVERAGE
INCOME

Quality Based on Results, Not Promises.

Contact Us For More Information

JOEL WOLSKI

Director, Associate

T 780.423.7599

C 780.904.5630

joel@royalparkrealty.com

SCOTT ENDRES

Partner, Broker

T 780.423.7588

C 780.720.6541

scott@royalparkrealty.com

JOANNA LEWIS

Associate

T 780.423.7580

C 780.999.9642

joanna@royalparkrealty.com



ROYAL PARK
REALTY™

T 780.448.0800 F 780.426.3007
#201, 9038 -51 Avenue NW Edmonton, AB T6E 5X4

royalparkrealty.com