

# FOR SALE

## INDUSTRIAL LOT IN LEDUC BUSINESS PARK

7903 34 Street, Leduc, AB



### HIGHLIGHTS

- Fully serviced industrial land
- 1 lot available 5.19 acres +/-
- Ready for immediate development
- Build to suit options available
- Lots are stripped and graded
- Excellent geotechnical qualities
- Leduc Business Park has high development standards ensuring long term integrity
- Access to the High Load Corridor
- Easy access to the Edmonton International Airport

### CONTACT

#### **BERT GAUDET**

Director, Associate Broker  
T 780.955.7171 C 780.984.8302  
bert@royalparkrealty.com

#### **KELLY GIBBON**

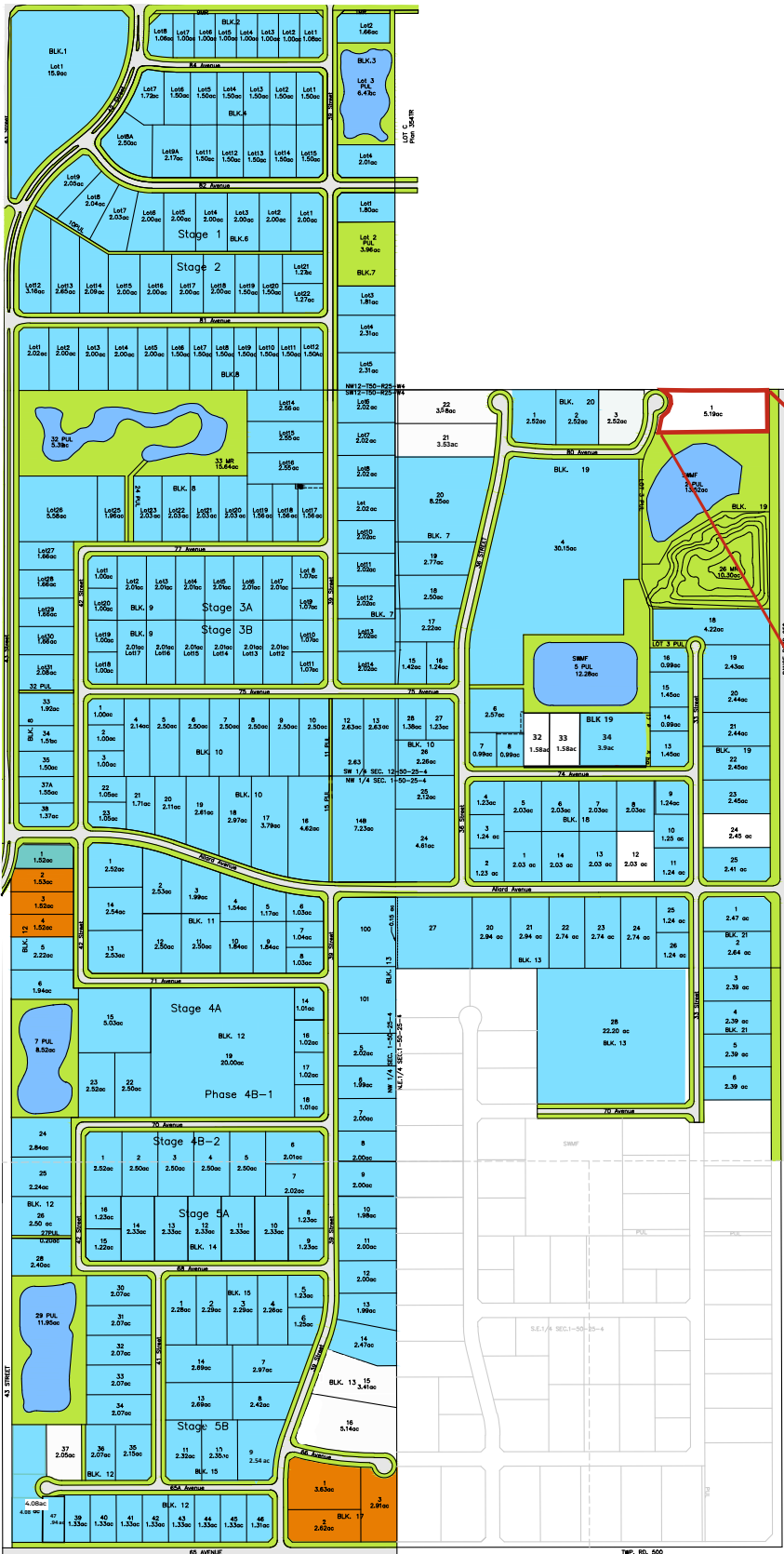
Director, Associate  
T 780.955-7171 C 780.700.1424  
kelly@royalparkrealty.com



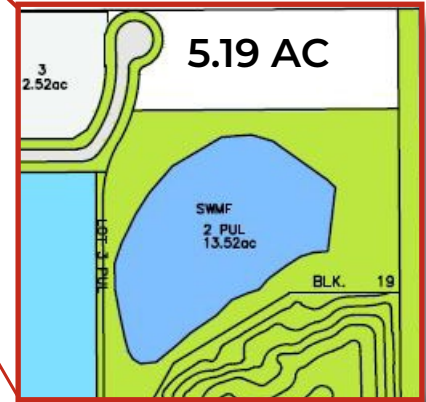
**ROYAL PARK**  
REALTY™

T 780.955.7171 F 780.955.7764  
#25, 1002 7 Street, Nisku, AB T9E 7P2

[royalparkrealty.com](http://royalparkrealty.com)



- SOLD
- PENDING
- CONDITIONS LIFTED
- OPTION TO PURCHASE
- CURRENT/PROPOSED FARM AIR DEVELOPMENT



**1 Lot Available**

- 5.19 acres (+/-)



**ROYAL PARK REALTY™**

T 780.955.7171 F 780.955.7764  
 #25, 1002 7 Street, Nisku, AB T9E 7P2  
[royalparkrealty.com](http://royalparkrealty.com)

## PROPERTY DETAILS

ZONING	M2 (Medium Industrial)
MUNICIPAL ADDRESS	7903 34 Street, Leduc, AB
LEGAL ADDRESS	Plan: 132 3038; Block: 19; Lot: 1
BUSINESS PARK	Leduc Business Park
SIZE	5.19 acres +/-
SALE PRICE	\$500,000/acre
SERVICES	Fully serviced, power, water, gas and sewer to the property line

## INFORMATION VIDEO



## LEDUC BUSINESS PARK LOCATION



ROYAL PARK  
REALTY™

T 780.955.7171 F 780.955.7764  
#25, 1002 7 Street, Nisku, AB T9E 7P2

royalparkrealty.com

# ADDITIONAL LOTS AVAILABLE

INTERESTED IN PURCHASING LAND IN THE LEDUC BUSINESS PARK  
BUT THIS LOT DOESN'T QUITE FIT YOUR NEEDS?  
CHECK OUT THE ADDITIONAL LOTS AVAILABLE BELOW!

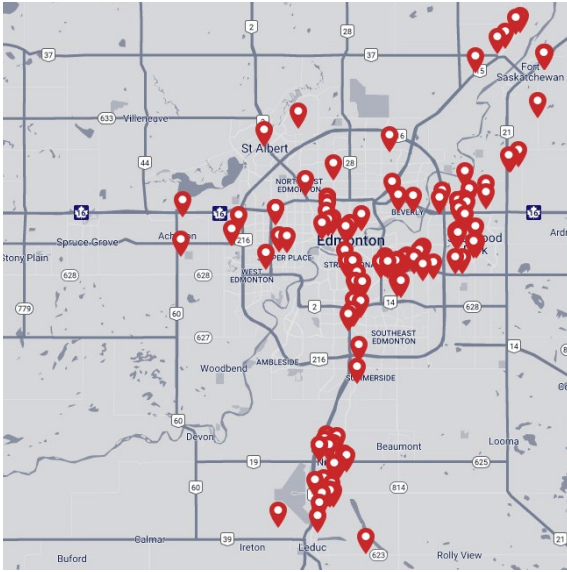


**ROYAL PARK**  
REALTY™

T 780.955.7171 F 780.955.7764  
#25, 1002 7 Street, Nisku, AB T9E 7P2

[royalparkrealty.com](http://royalparkrealty.com)

# ABOUT ROYAL PARK REALTY



- We've been in business since 1975
- We service the greater Edmonton area
- Two offices - Edmonton and Nisku
- Over 10 professional associates - representing a diverse cross section of market expertise
- Commercial real estate only. We have tremendous experience with industrial, land, office and retail real estate
- We're in business for the long term - our brand and reputation are paramount to us and we serve our clients accordingly

**BERT GAUDET**  
Director, Associate Broker



In 2010 Bert, as an owner of Garstad and Whittingham Realty, joined forces with the Royal Park Realty team. He has 20 years of commercial real estate experience, with specific knowledge of the Nisku/Leduc market.

Bert enjoys providing personalized service to his clients and prides himself on building long-term relationships with them. He is passionate about putting together deals and consistently producing results.

**KELLY GIBBON, MBA**  
Director, Associate



Kelly takes great pride in the service he provides. His focus is aligning his efforts with the goals and desires of his clients. This approach has been extraordinarily beneficial to the people and companies that he represents and has helped Kelly create many long term relationships as a trusted advisor.

Kelly's thorough attention to detail as well as his creative approach to problem solving has made him a huge asset to his real estate clientele.



**ROYAL PARK  
REALTY™**

T 780.955.7171 F 780.955.7764  
#25, 1002 7 Street, Nisku, AB T9E 7P2

[royalparkrealty.com](http://royalparkrealty.com)