

FOR SALE

5.81 ACRES (+/-) DEVELOPMENT LAND IN SHERWOOD PARK
700 Lakeland Drive, Sherwood Park, AB



HIGHLIGHTS

- Great location close to Yellowhead Trail
- Part of Millennium Business Park
- Build to suit options available
- Close proximity to Millennium Place which sees over 2.3 million visitors per year
- Excellent exposure on Lakeland Drive with easy access to Sherwood Dr, Broadmoor Blvd and Baseline Rd

CONTACT

ERIC STANG

Partner, Associate

T 780.423.7585

C 780.667.9605

eric@royalparkrealty.com



ROYAL PARK
REALTY™

T 780.448.0800 F 780.426.3007
#201, 9038 51 Ave NW Edmonton, AB T6E 5X4

royalparkrealty.com

PROPERTY LOCATION



PROPERTY DETAILS

LOCATION	700 Lakeland Drive, Sherwood Park, AB
LEGAL DESCRIPTION	Plan: 1024941; Block: 242; Lot: 15
ZONING	C5 (Service Commercial)
LOT SIZE	5.81 acres (+/-)

FINANCIALS

SALE PRICE	\$2,400,000.00
PROPERTY TAXES	\$35,576.00/yr (2023)
POSSESSION	Negotiable

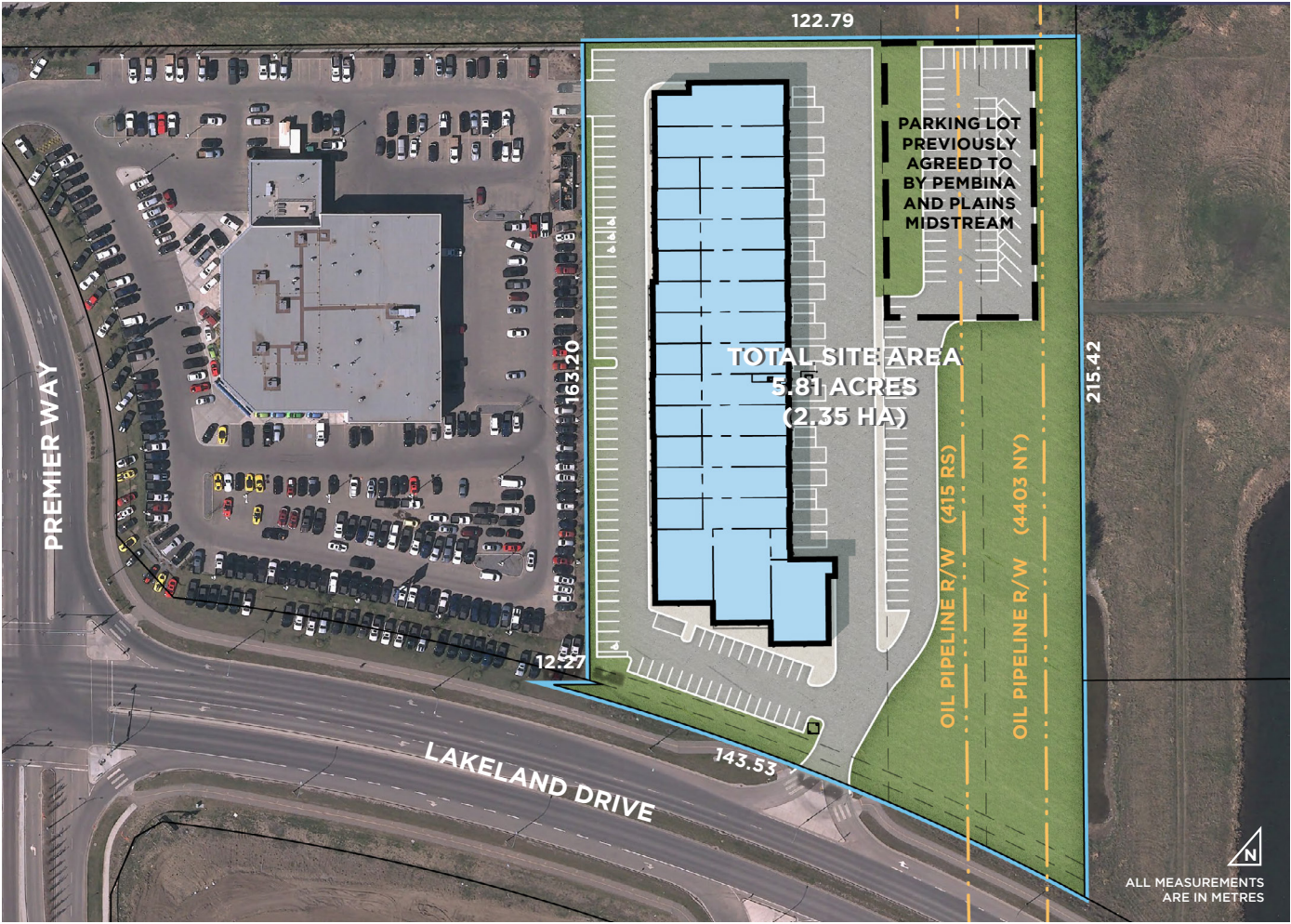


ROYAL PARK
REALTY™

T 780.448.0800 F 780.426.3007
#201, 9038 51 Ave NW Edmonton, AB T6E 5X4

royalparkrealty.com

SITE PLAN



STRATHCONA COUNTY

Population: 103,362

Number of
Households: 38,575

Average
Household
Income: \$133,500

Major Roadways:

- Highway 21
- Highway 16
- Anthony Henday
- Highway 630

SHERWOOD PARK

Population: 73,000

Number of
Households: 30,089

Average
Household
Income: \$180,722

Major Roadways:

- Broadmoor Blvd.
- Baseline Road
- Wye Road
- Cloverbar Road
- Yellowhead Trail
- Emerald Drive
- Sherwood Drive



ROYAL PARK
REALTY™

T 780.448.0800 F 780.426.3007
#201, 9038 51 Ave NW Edmonton, AB T6E 5X4

royalparkrealty.com



*Quality Based on **Results**, Not **Promises**.*



ERIC STANG

Partner, Associate

T 780.423.7585

C 780.667.9605

eric@royalparkrealty.com

Eric was born in Saskatchewan and raised in Edmonton. He spent 12 years working with a major mobile heavy equipment supplier in a sales and account management capacity. Eric has a Business Administration Diploma from the Northern Alberta Institute of Technology.

As a member of Royal Park Realty's team since 2010, Eric handles a variety of important listing agreements including building sales, traditional leasing and land sales. His knowledge of the industries that keep Alberta moving is an asset to clients looking for a solution to their Real Estate needs. Eric prides himself on building long-term client relationships based on an understanding of the clients' needs and business requirements.

Eric is an active family and community person. He and his wife are raising their three boys in the Edmonton area.



**ROYAL PARK
REALTY™**

T 780.448.0800 F 780.426.3007
#201, 9038 51 Ave NW Edmonton, AB T6E 5X4

royalparkrealty.com