

FOR LEASE

75th STREET INDUSTRIAL FACILITY

7410-68 Avenue NW, Edmonton, AB



HIGHLIGHTS

- 14,965 sq ft ± industrial shop & office available
- Recently renovated office features reception, 5 offices, 3 washrooms
- Shop features 10-ton & 5-ton overhead bridge cranes, trench sumps and extensive power distribution
- 5,000 sq ft ± exterior crane-way
- Oversized grade loading
- Excellent location with quick access to major arterial roads including 75 Street & Sherwood Park Freeway

CONTACT



JOEL WOLSKI

Director, Associate

C 780.904.5630

T 780.423.7599

joel@royalparkrealty.com

SCOTT ENDRES

Partner, Broker

C 780.720-6541

T 780.423.7588

scott@royalparkrealty.com

ERIC STANG

Partner, Associate

C 780.667.9605

T 780.423.7585

eric@royalparkrealty.com

JOANNA LEWIS

Associate

C 780.999.9642

T 780.423.7580

joanna@royalparkrealty.com



ROYAL PARK
REALTY™

T 780.448.0800 F 780.426.3007
#201, 9038 51 Avenue NW Edmonton, AB T6E 5X4

royalparkrealty.com

Overview | 7410-68 Avenue NW, Edmonton, AB



Property Information

MUNICIPAL ADDRESS	7410-68 Avenue NW, Edmonton, AB
LEGAL DESCRIPTION	Plan: 4254MC; Block: 11; Lot: K
ZONING	IM (Medium Industrial)
SPACE AVAILABLE	14,965 sq ft ±
CRANES	(1) 5-ton & (1) 10-ton
EXTERIOR CRANE	50' x 100' crane rail
COLUMN GRID	50' clear span
GRADE LOADING	(1) 15' x 16'
CEILING HEIGHT	24.5' at eave, 31' at centre, 18' hook height
POWER	800 Amp, 480 Volt, 3 Phase
SUMPS	Trench
POSSESSION	Immediate

Financials

Lease Rate:

Starting at \$8.25/sq ft (net)

Operating Costs:

\$3.25/sq ft

Utilities (est.):

\$5.50/sq ft

***Note: Estimate based on former Heavy Fabrication Tenant.*

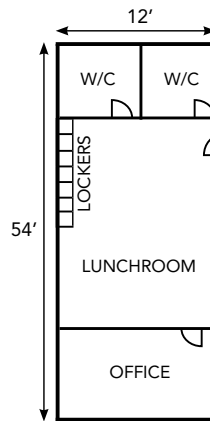
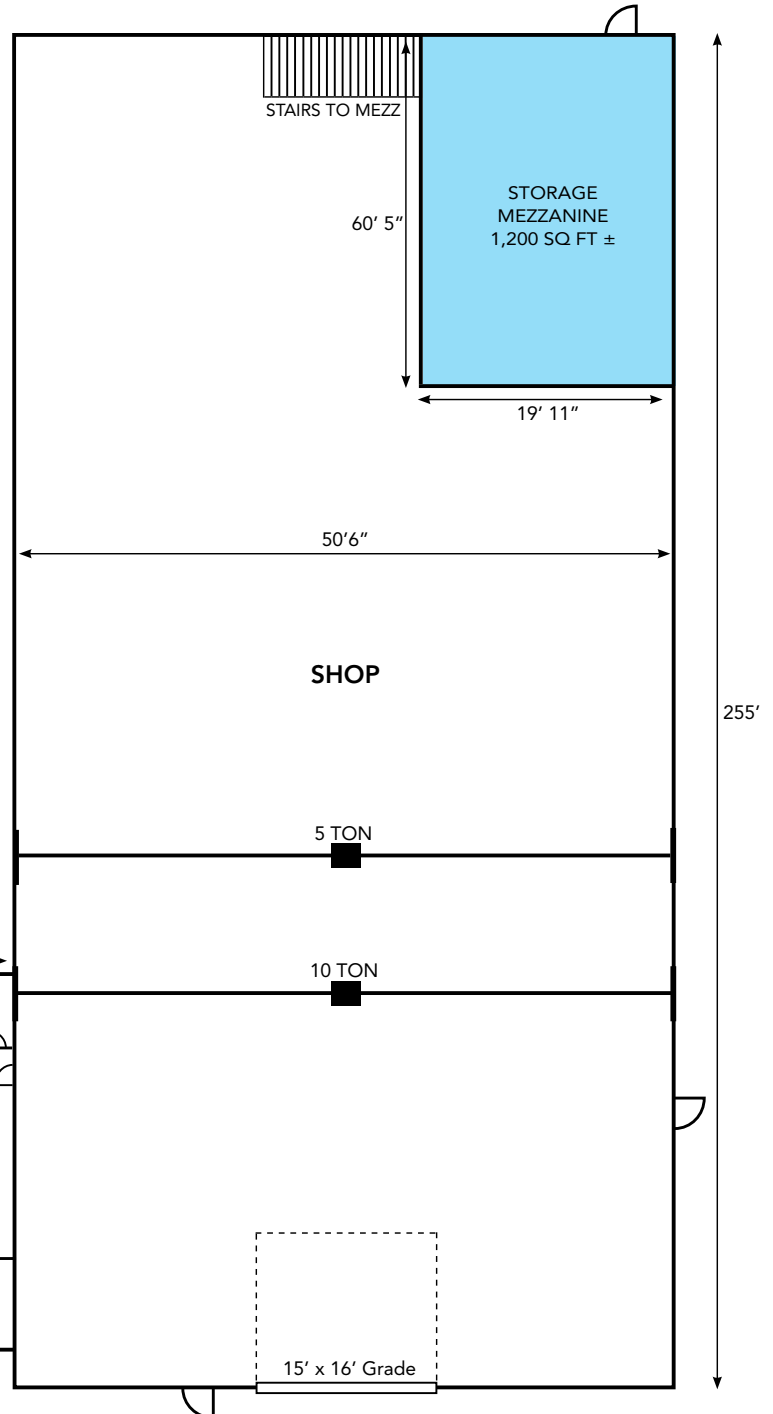
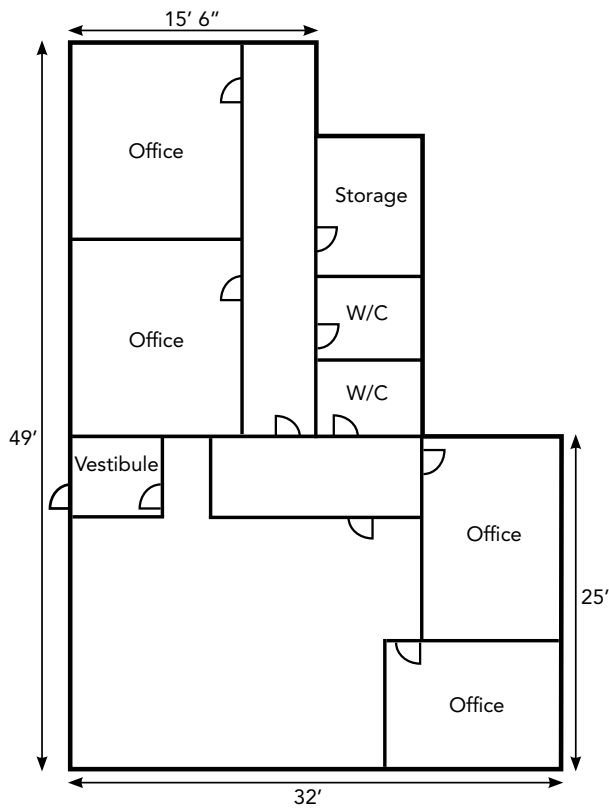


**ROYAL PARK
REALTY™**

T 780.448.0800 F 780.426.3007
#201, 9038 51 Avenue NW Edmonton, AB T6E 5X4

royalparkrealty.com

Shop & Office Layout | 7410-68 Avenue NW, Edmonton, AB



- 5 Ton & 10 Ton overhead cranes
- Exterior craneway
- Oversized grade loading door
- Make-up air system
- Shaw fibre optic
- LED lighting
- Trench sumps
- Extensive power distribution

- Recently renovated office space
- Shared paved parking includes ample parking with energized stalls
- Office is air-conditioned
- Excellent access to major roadways



ROYAL PARK
REALTY™

T 780.448.0800 F 780.426.3007
#201, 9038 51 Avenue NW Edmonton, AB T6E 5X4

royalparkrealty.com

Photos | 7410-68 Avenue NW, Edmonton, AB

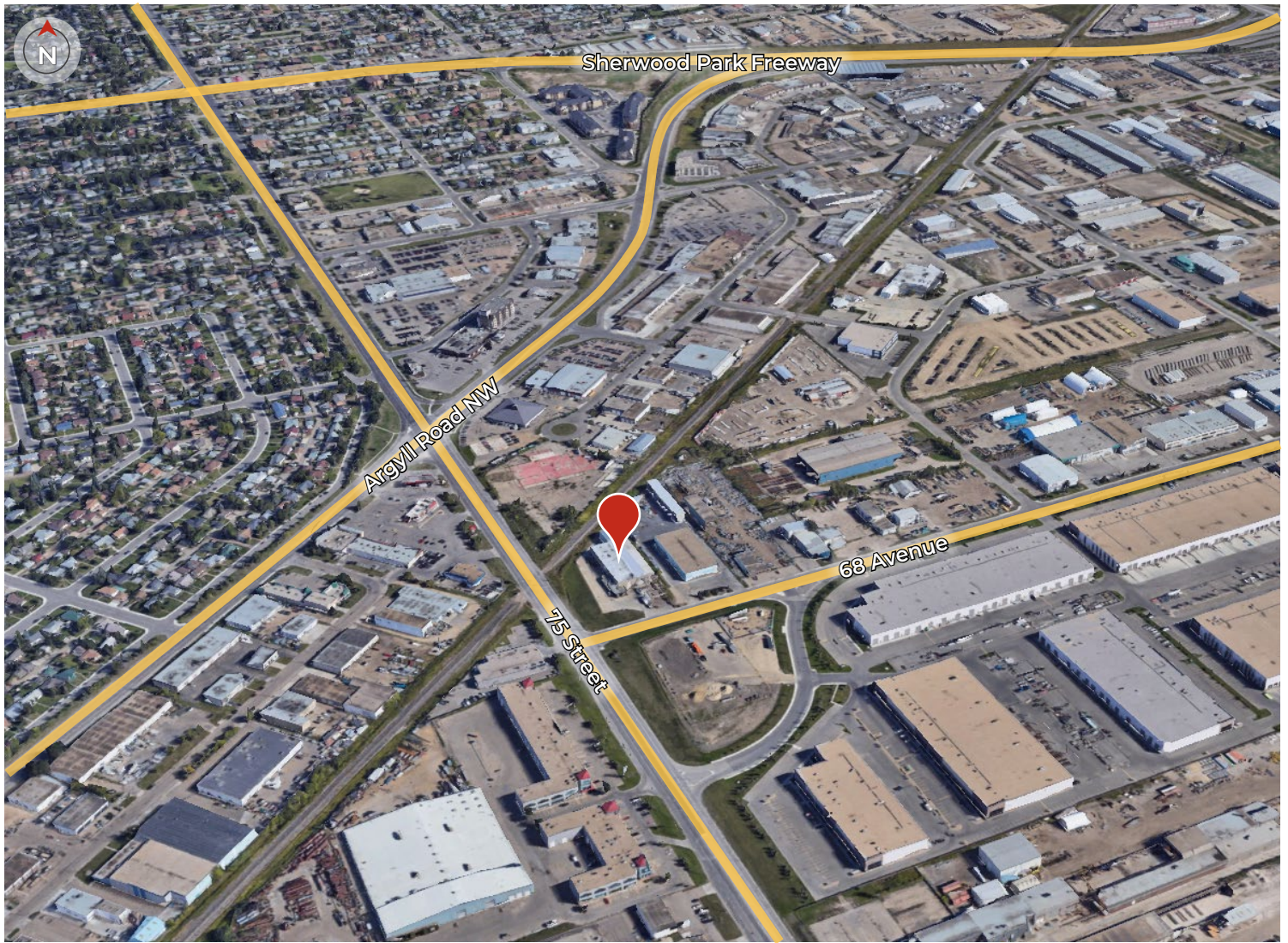


ROYAL PARK
REALTY™

T 780.448.0800 F 780.426.3007
#201, 9038 51 Avenue NW Edmonton, AB T6E 5X4

royalparkrealty.com

Property Location | 7410-68 Avenue NW, Edmonton, AB



*Quality Based on **Results**, Not **Promises**.*

Contact Our Team For More Information

JOEL WOLSKI

Director, Associate

T 780.423.7599

C 780.904.5630

joel@royalparkrealty.com

ERIC STANG

Partner, Associate

T 780.423.7585

C 780.667.9605

eric@royalparkrealty.com

SCOTT ENDRES

Partner, Broker

T 780.423.7588

C 780.720.6541

scott@royalparkrealty.com

JOANNA LEWIS

Associate

T 780.423.7580

C 780.999.9642

joanna@royalparkrealty.com



ROYAL PARK
REALTY™

T 780.448.0800 F 780.426.3007
#201, 9038 51 Avenue NW Edmonton, AB T6E 5X4

royalparkrealty.com