

FOR LEASE

MAIN FLOOR OFFICE SPACE

9333-37 Avenue NW, Edmonton, AB



HIGHLIGHTS

- 2,378 sq ft ± of main floor office space
- Modern office space features reception area, 8 offices, kitchenette, washroom and storage
- Optional 1,500 sq ft ± of storage area is available
- Designated parking and street parking available
- Conveniently located on the southside with excellent access to 91st Street & Whitemud Drive

CONTACT

SCOTT ENDRES

Partner, Broker

C 780.720-6541

scott@royalparkrealty.com

JOEL WOLSKI

Director, Associate

C 780.904.5630

joel@royalparkrealty.com

JOANNA LEWIS

Associate

T 780.423.7580

joanna@royalparkrealty.com



ROYAL PARK
REALTY™

T 780.448.0800 F 780.426.3007
#201, 9038 51 Avenue NW Edmonton, AB T6E 5X4

royalparkrealty.com

FOR LEASE | Main Floor Office Space in Southeast Edmonton



RECEPTION AREA



OFFICE

PROPERTY DETAILS

MUNICIPAL ADDRESS	9333-37 Avenue NW, Edmonton, AB
LEGAL DESCRIPTION	Plan: 7621409; Block: 20; Lot: 2
ZONING	BE (Business Employment)
SIZE	2,378 sq ft ±
HVAC	Forced air and air conditioning
LIGHTING	Fluorescent
PARKING	7 Designated stalls (street parking available)
SIGNAGE	Facade



AMPLE NATURAL LIGHT

FINANCIALS

LEASE RATE	\$14.50/sq ft
OPERATING COSTS	\$7.00/sq ft (2024)
POSSESSION	Negotiable



BOARDROOM

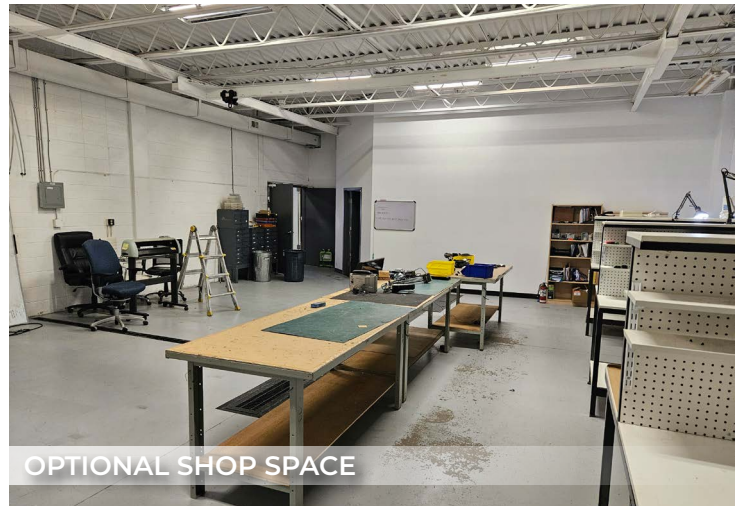
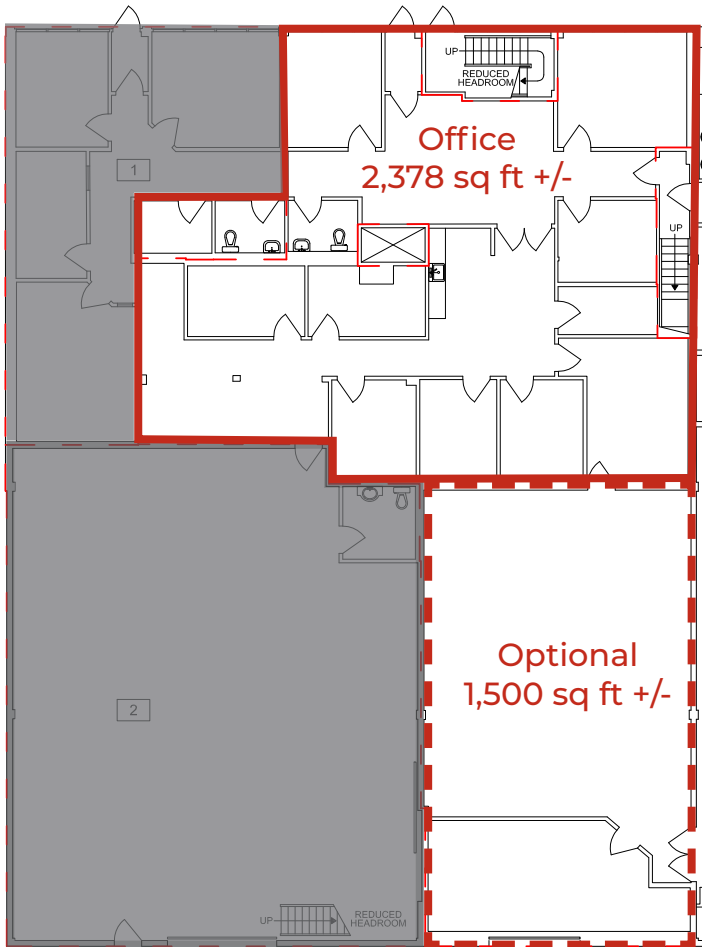


ROYAL PARK
REALTY™

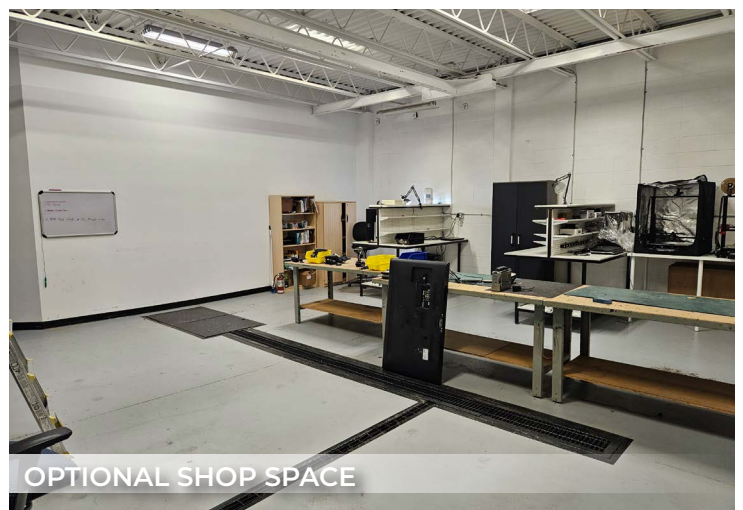
T 780.448.0800 F 780.426.3007
#201, 9038 51 Avenue NW Edmonton, AB T6E 5X4

royalparkrealty.com

FLOOR PLAN | Main Floor Office Space in Southeast Edmonton



OPTIONAL SHOP SPACE



OPTIONAL SHOP SPACE



KITCHENETTE

ADDITIONAL INFORMATION

- The main floor office space includes a reception area, 1 washroom, 8 offices, a kitchenette and storage.
- Features large windows for ample natural light
- Separate entrance

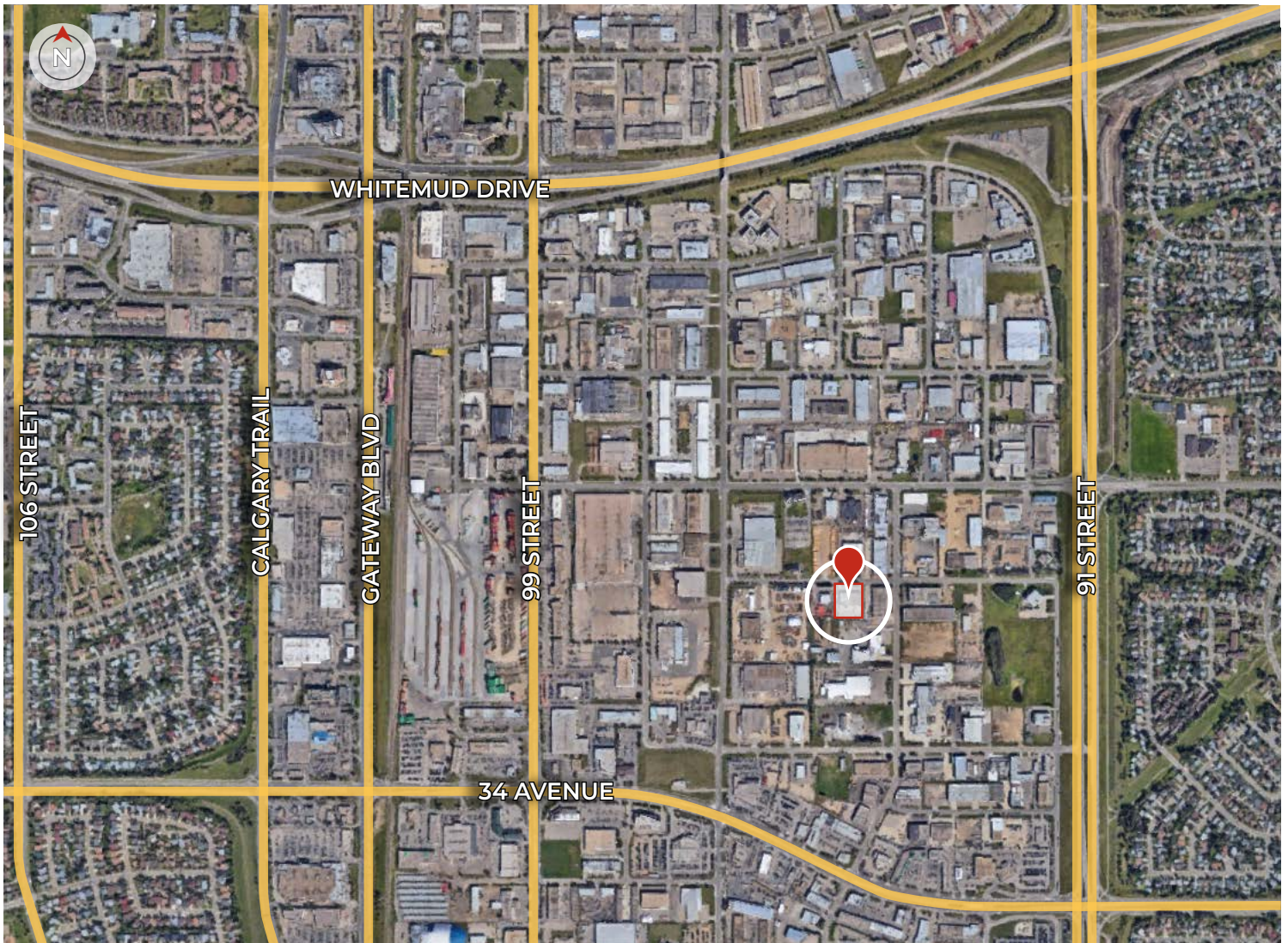


ROYAL PARK
REALTY™

T 780.448.0800 F 780.426.3007
#201, 9038 51 Avenue NW Edmonton, AB T6E 5X4

royalparkrealty.com

PROPERTY LOCATION | Main Floor Office Space in Southeast Edmonton



*Quality Based on **Results**, Not **Promises**.*

Contact Our Team For More Information

SCOTT ENDRES

Partner, Broker

C 780.720.6541

scott@royalparkrealty.com

JOEL WOLSKI

Director, Associate

C 780.904.5630

joel@royalparkrealty.com

JOANNA LEWIS

Associate

T 780.423.7580

joanna@royalparkrealty.com



ROYAL PARK
REALTY™

T 780.448.0800 F 780.426.3007
#201, 9038 51 Avenue NW Edmonton, AB T6E 5X4

royalparkrealty.com