

FOR SALE / LEASE

LEDUC INDUSTRIAL CONDO

#105/#106, 7609 Sparrow Drive, Leduc, AB



HIGHLIGHTS

- 1,905 - 3,864 sq ft ± drive-thru industrial condo
- Recent upgrades include: power washed, fresh paint, LED lighting
- Fully paved marshalling area
- 1 office and 2 washrooms
- Prime visibility to Sparrow Drive
- Excellent access to major thoroughfares including Airport Road & QE II

CONTACT

ERIC STANG

Partner, Associate

C 780.667.9605

eric@royalparkrealty.com

JOANNA LEWIS

Associate

C 780.999.9642

joanna@royalparkrealty.com



ROYAL PARK
REALTY™

T 780.448.0800 F 780.426.3007
#201, 9038 51 Avenue NW Edmonton, AB T6E 5X4

royalparkrealty.com

PROPERTY DETAILS

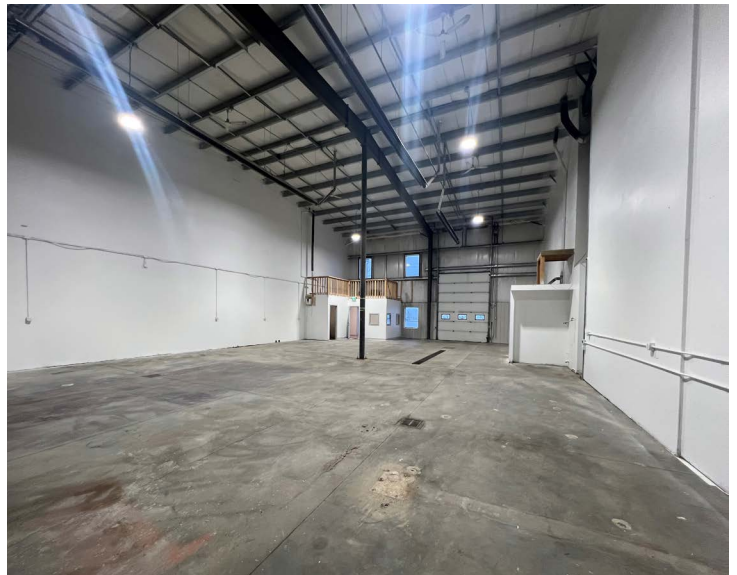
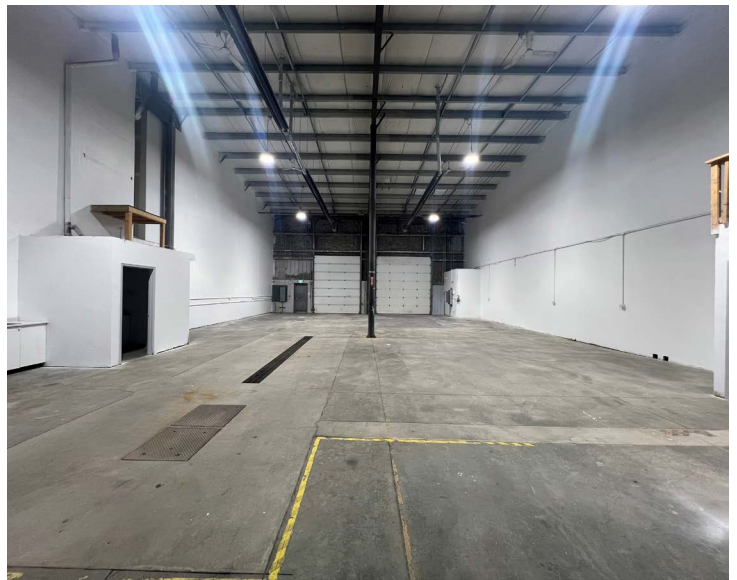
MUNICIPAL ADDRESS	#105/#106, 7609 Sparrow Drive, Leduc, AB
LEGAL DESCRIPTION	Condo Plan: 1221300 Units: 9 & 10
ZONING	IBL (Business Light Industrial)
TYPE OF SPACE	Industrial Condo
YEAR BUILT	2012
SIZE	1,905 - 3,864 sq ft ±
GRADE LOADING	(3) 12' x 14' (drive-thru)
CEILING HEIGHT	18' 7" - 26' 10"
HVAC	Forced air in office, radiant in shop
LIGHTING	T5
POWER	225 Amp, 240, 120/208 Volt 3 Phase
DRAINAGE	Trench and dual compartment sump
PARKING	Scramble

FINANCIALS

SALE PRICE	
SINGLE BAY	\$476,250 (\$250.00/sq ft)
DOUBLE BAY	\$909,000 (\$235.00/sq ft)
CONDO FEES	\$607.27/month (2024)
PROPERTY TAXES	\$10,051.44/annum (2024)
LEASE RATE	\$15.00/sq ft starting at \$14.75/sq ft
OP COSTS	\$4.80/sq ft
POSSESSION	Immediate

Additional Information

- Direct frontage to Sparrow Drive
- Storage mezzanine in warehouse
- Demisable into two separate units



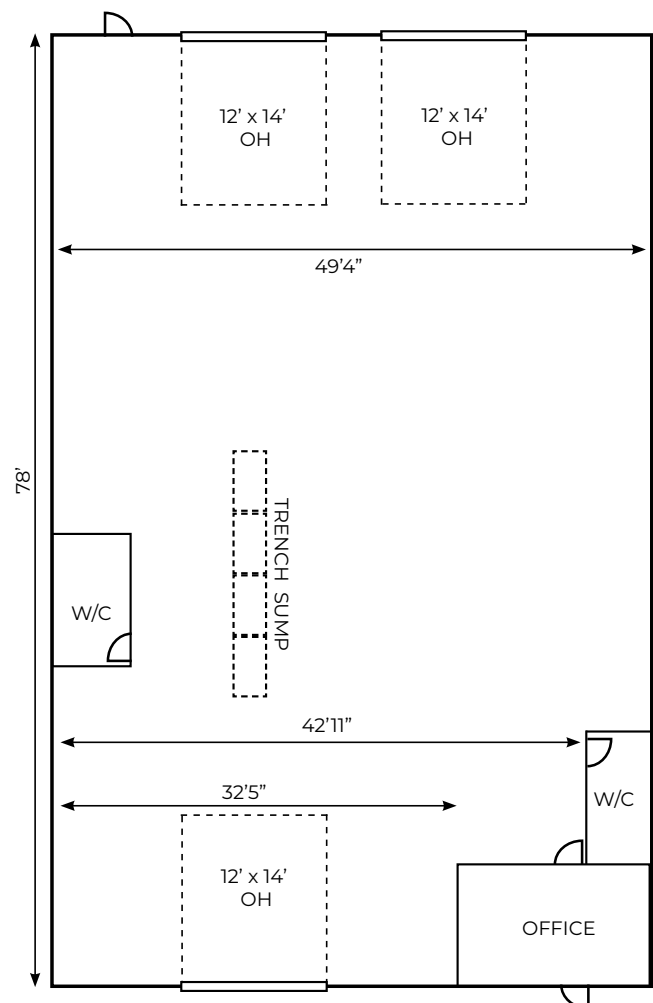
ROYAL PARK
REALTY™

T 780.448.0800 F 780.426.3007
#201, 9038 51 Avenue NW Edmonton, AB T6E 5X4

royalparkrealty.com

Leduc Industrial Condo For Sale/Lease | #105/106, 7609 Sparrow Drive

Inside measurements, for illustration purposes only



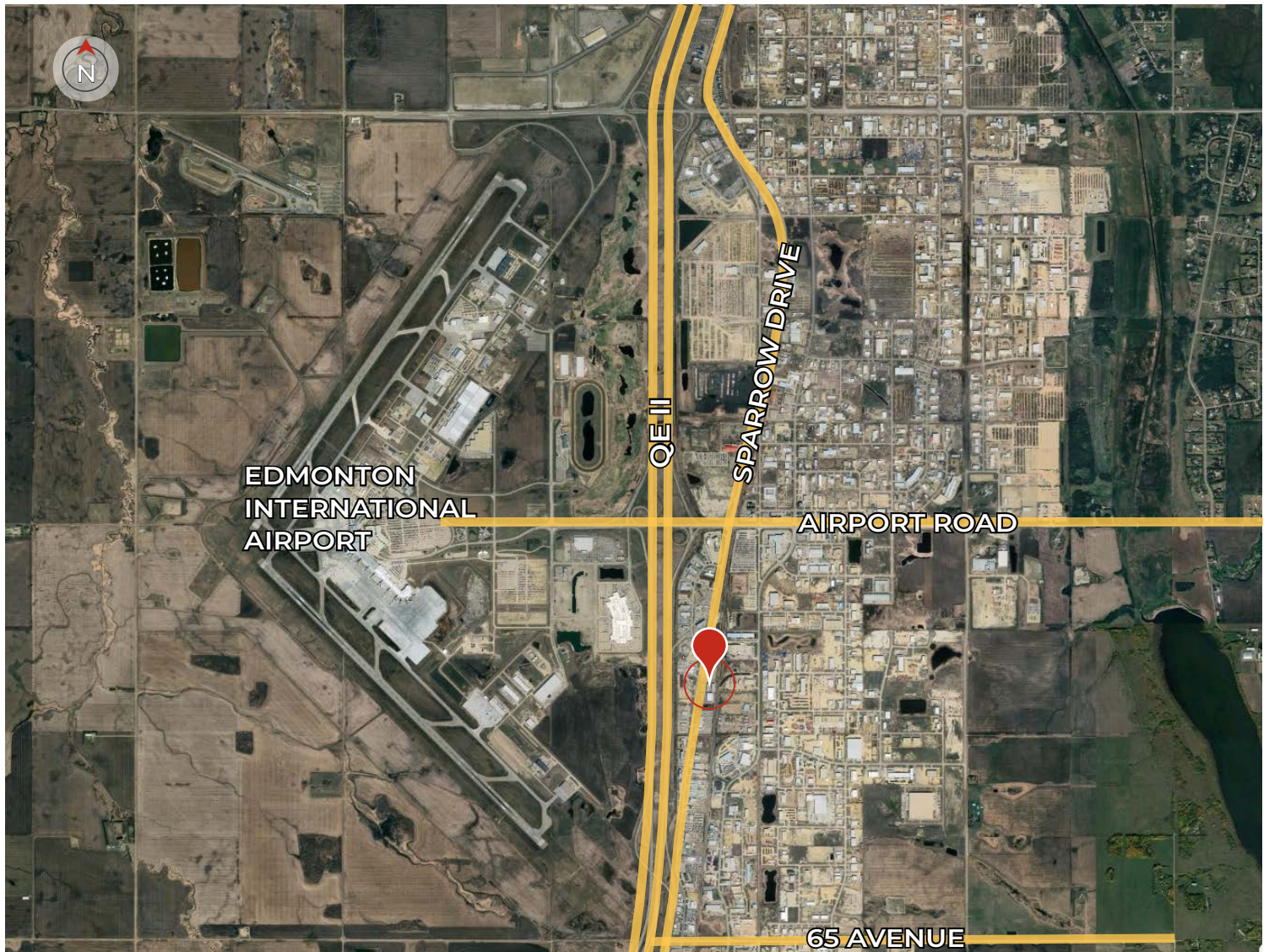


ROYAL PARK
REALTY™

T 780.448.0800 F 780.426.3007
#201, 9038 51 Avenue NW Edmonton, AB T6E 5X4
royalparkrealty.com

The information contained herein is believed to be correct, however does not form part of any future contract. The offering may be withdrawn at any time without notice or cause.

Leduc Industrial Condo For Sale/Lease | #105/106, 7609 Sparrow Drive



Quality Based on **Results**, Not **Promises**.



ERIC STANG

Partner, Associate

C 780.667.9605

eric@royalparkrealty.com



JOANNA LEWIS

Associate

C 780.999.9642

joanna@royalparkrealty.com



**ROYAL PARK
REALTY™**

T 780.448.0800 F 780.426.3007
#201, 9038 51 Avenue NW Edmonton, AB T6E 5X4

royalparkrealty.com