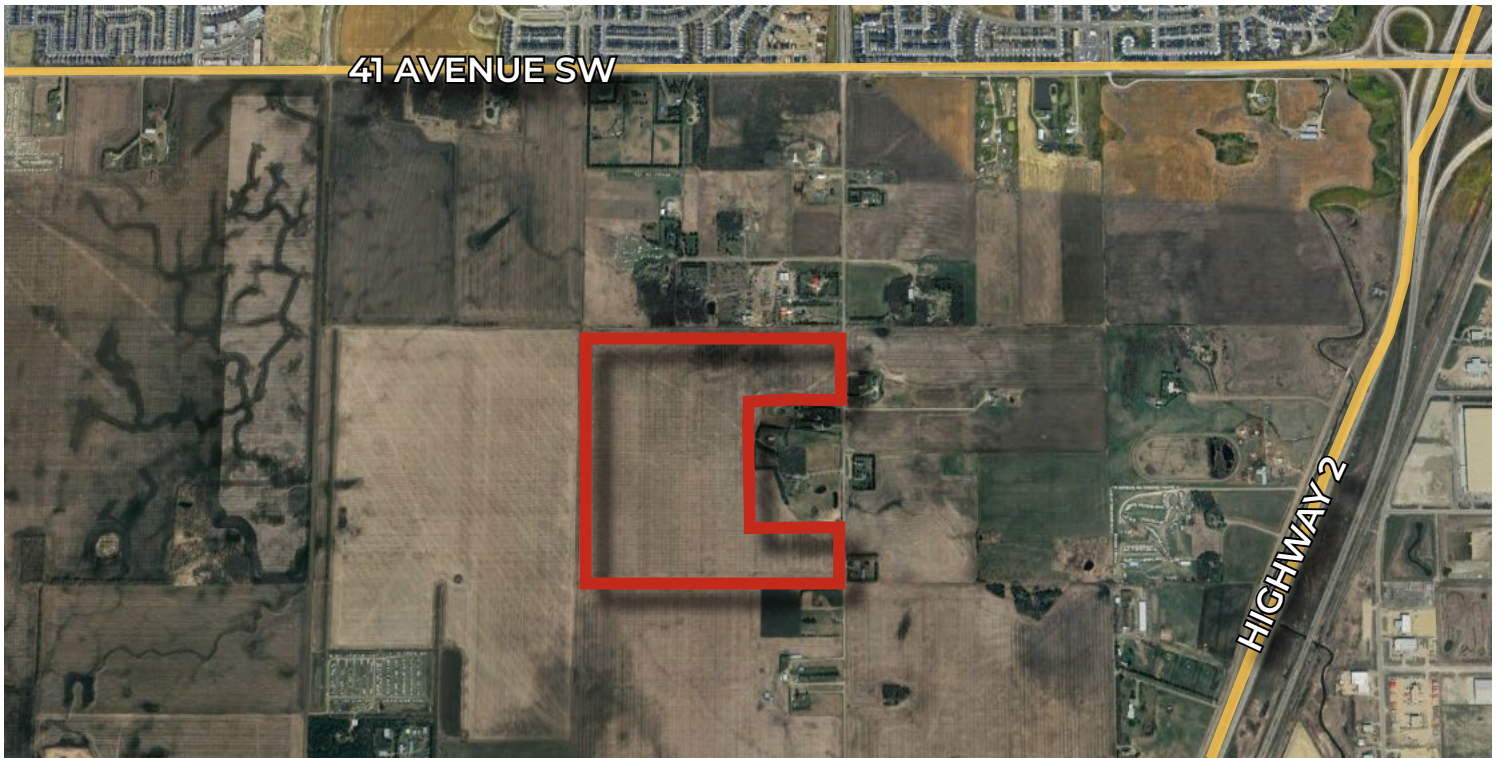


FOR SALE

SOUTH EDMONTON DEVELOPMENT LAND

5010 127 Street SW, Edmonton, AB



HIGHLIGHTS

- Prime 139.19 acre ± development site located in The City of Edmonton on 127 St SW
- 1 km from 41 Avenue, adjacent to Highway 2
- The land you were waiting for for your future projects
- Desired parcel is in middle of major attractions of that area such as an Event Venue, a Church, a Mosque and Shirdi Sai Baba Mandir
- 10 minute drive from South Edmonton Common & 15 minutes to Edmonton International Airport

CONTACTS

SCOTT ENDRES

Partner, Broker

C 780.720.6541

scott@royalparkrealty.com

JOEL WOLSKI

Director, Associate

C 780.904.5630

joel@royalparkrealty.com

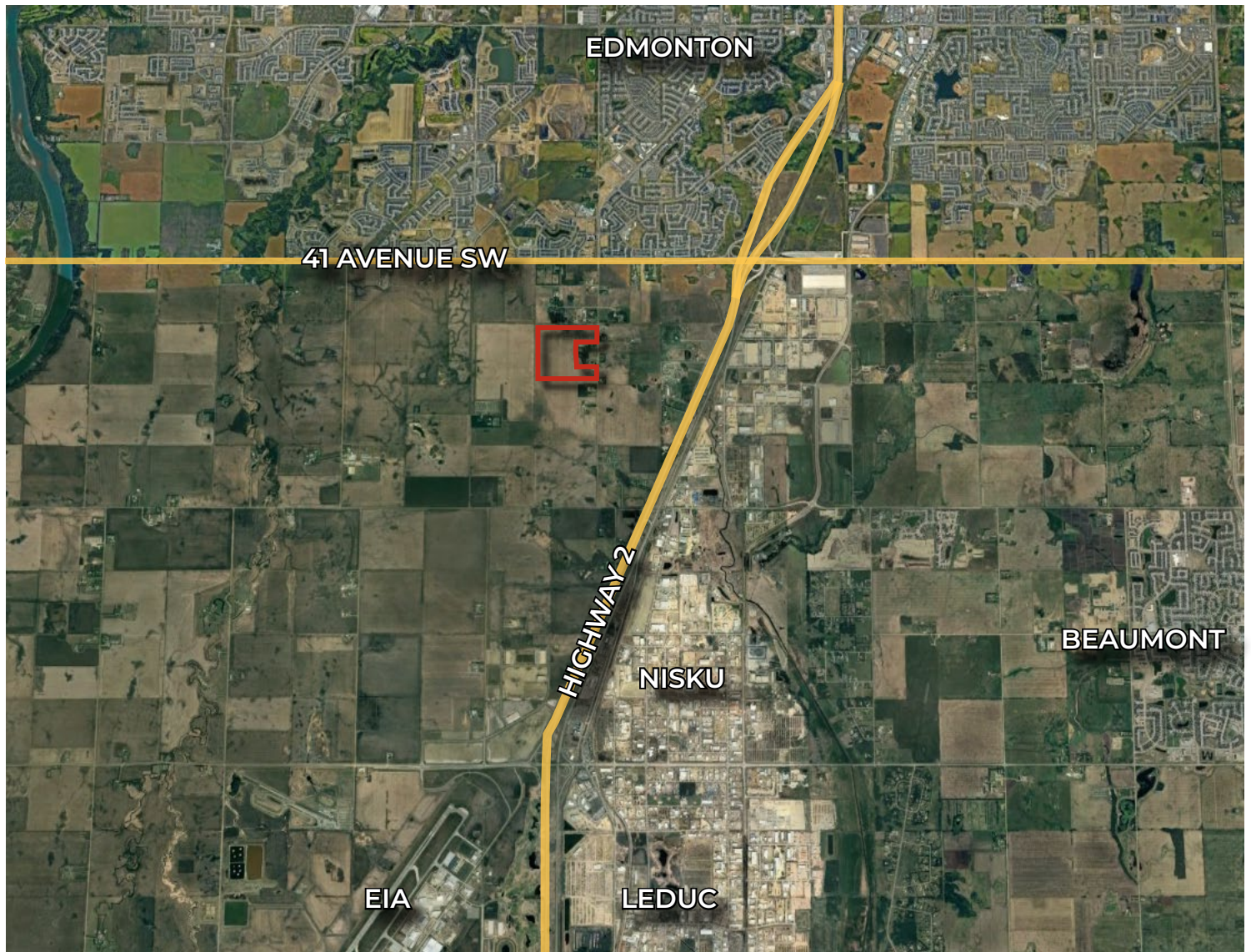


ROYAL PARK
REALTY™

T 780.448.0800 F 780.426.3007
#201, 9038 51 Avenue NW Edmonton, AB T6E 5X4

royalparkrealty.com

PROPERTY LOCATION | 5010 127 Street SW, Edmonton, AB



PROPERTY DETAILS

MUNICIPAL ADDRESS	5010 127 St SW, Edmonton, AB
LEGAL DESCRIPTION	SE 1/4; 12; 51; 25; 4
ZONING	AES (Agricultural Edmonton South)
LOT SIZE	139.19 acres ±

FINANCIALS

SALE PRICE	Market
POSSESSION	Negotiable



ROYAL PARK
REALTY™

T 780.448.0800 F 780.426.3007
#201, 9038 51 Avenue NW Edmonton, AB T6E 5X4

royalparkrealty.com