

FOR LEASE

MERIDIAN PLACE

#204, 7633 - 50 St NW, Edmonton, AB



HIGHLIGHTS

- 7,000 sq ft ± of second floor office space
- Well managed and maintained building
- Ample surface parking
- Opportunity for exterior building signage as well pylon signage
- Great exposure to a high traffic area
- Excellent southside location, just off Sherwood Park Freeway and 50 Street

CONTACT

DAVE QUEST

Associate

C 780.995.5405

dave@royalparkrealty.com

JOEL WOLSKI

Director, Associate

C 780.904.5630

joel@royalparkrealty.com



ROYAL PARK
REALTY™

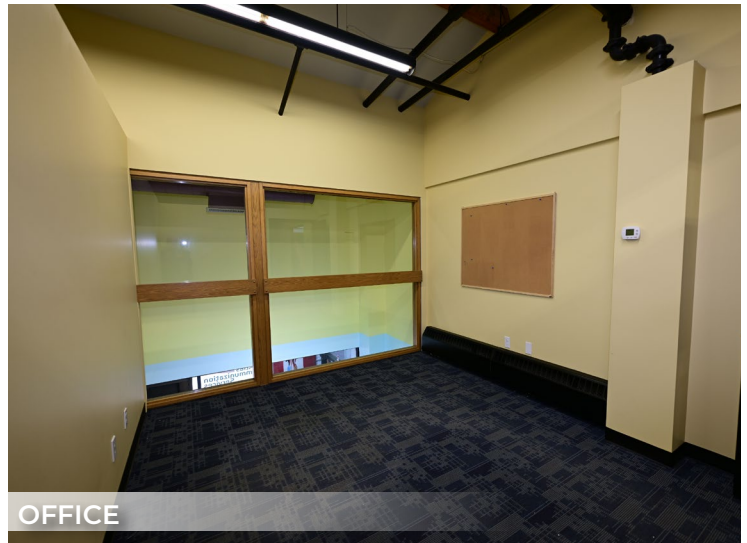
T 780.448.0800 F 780.426.3007
201, 9038 51 Ave NW Edmonton, AB T6E 5X4

royalparkrealty.com

FOR LEASE | #204, 7633 50 St NW, Edmonton, AB



INTERIOR ENTRANCE



OFFICE



BOARDROOM



KITCHEN

PROPERTY DETAILS

MUNICIPAL ADDRESS	#204, 7633 50 Street NW, Edmonton, AB
LEGAL DESCRIPTION	Plan: 2196RS; Lots: Q & S
ZONING	BE (Business Employment)
SITE SIZE	7,000 sq ft ±
TYPE OF SPACE	Office
PARKING	3 stalls/1,000 sq ft surface
SIGNAGE	Building and pylon
HEATING	HVAC

FINANCIALS

LEASE RATE	\$14.00/ sq ft
OP COSTS	\$9.00/ sq ft (incl. utilities)
POSSESSION	Immediate

ADDITIONAL FEATURES

- Close proximity to numerous amenities
- Other uses in the complex include dance studio, day care, health care services, insurance, immigration services and more!



ROYAL PARK
REALTY™

T 780.448.0800 F 780.426.3007
201, 9038 51 Ave NW Edmonton, AB T6E 5X4

royalparkrealty.com

PHOTOS



AERIAL



STAIRCASE TO SECOND FLOOR



BUSINESS CENTRE RECEPTION



SECOND FLOOR COMMON AREA

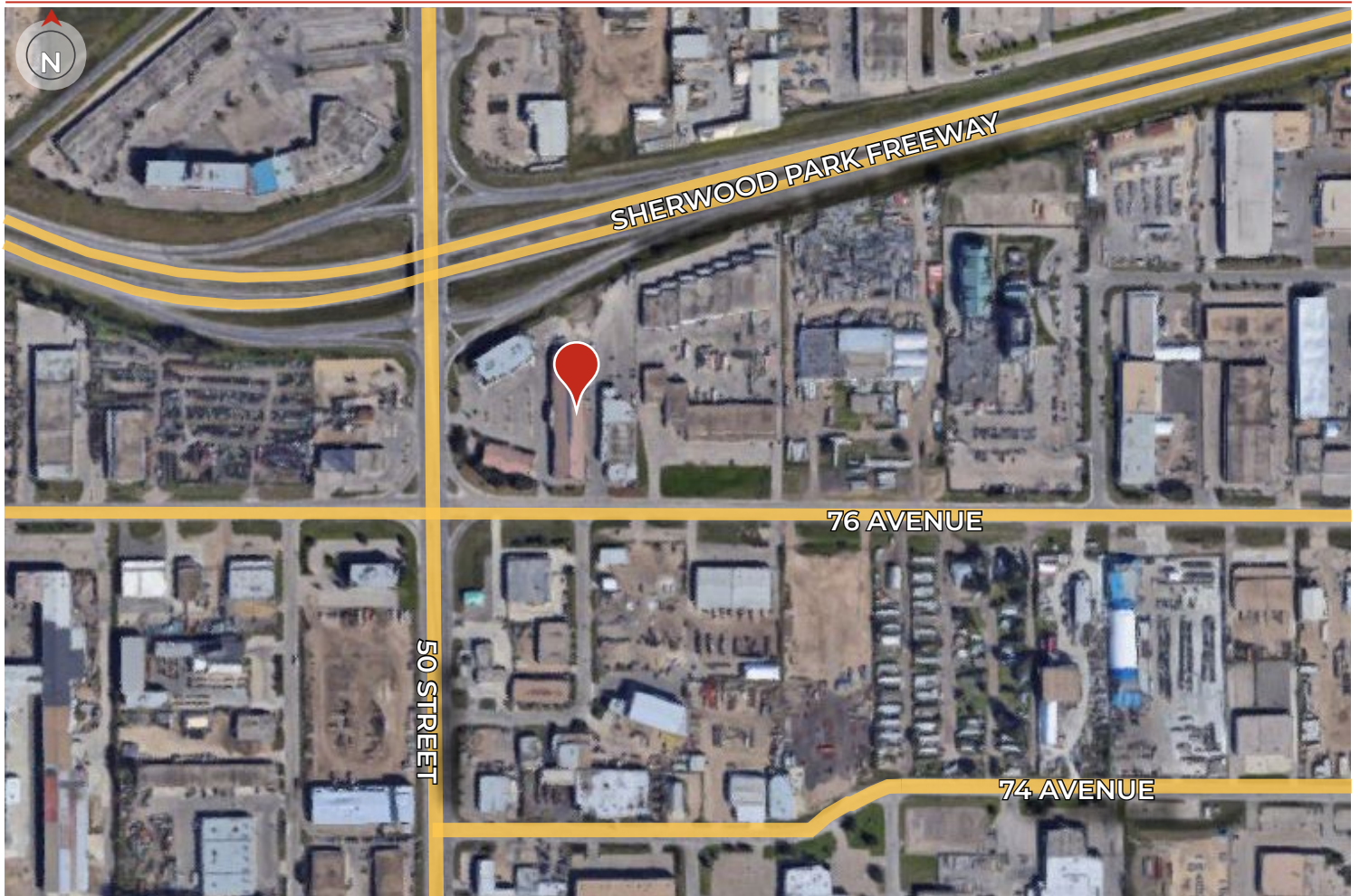


ROYAL PARK
REALTY™

T 780.448.0800 F 780.426.3007
201, 9038 51 Ave NW Edmonton, AB T6E 5X4

royalparkrealty.com

PROPERTY LOCATION



Quality Based on Results, Not Promises.



DAVE QUEST

Associate

C 780.995.5405

dave@royalparkrealty.com



JOEL WOLSKI

Director, Associate

C 780.904.5630

joel@royalparkrealty.com



**ROYAL PARK
REALTY™**

T 780.448.0800 **F** 780.426.3007
201, 9038 51 Ave NW Edmonton, AB T6E 5X4

royalparkrealty.com