

FOR LEASE

119 STREET CHARACTER OFFICE SPACE

11302-119 Street NW, Edmonton, AB



HIGHLIGHTS

- 2,320 ft ± fully built out character office unit
- Open high beam ceilings and exposed brick
- Includes executive offices, boardroom, kitchenette and a shared washroom
- Ideal for many professional users including accountants, lawyers, consulting firms, administrative and more
- Fronting 119 Street with excellent access to Kingsway Avenue and minutes to the downtown core

CONTACTS

JOEL WOLSKI

Director, Associate

C 780.904.5630

joel@royalparkrealty.com

SCOTT ENDRES

Partner, Broker

C 780.720.6541

scott@royalparkrealty.com



360°
VIRTUAL TOUR



ROYAL PARK
REALTY™

T 780.448.0800 F 780.426.3007
#201, 9038-51 Avenue, Edmonton, AB T6E 5X4

royalparkrealty.com

FOR LEASE | Unit 1, 11302-119 Street NW, Edmonton, AB

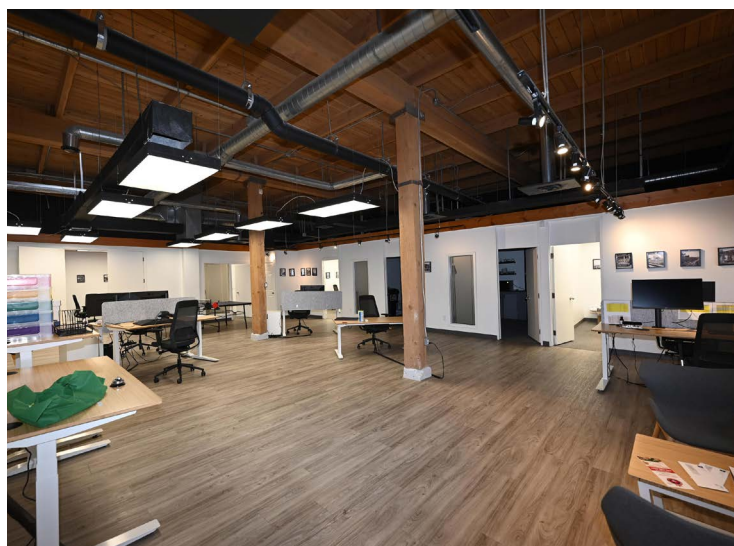
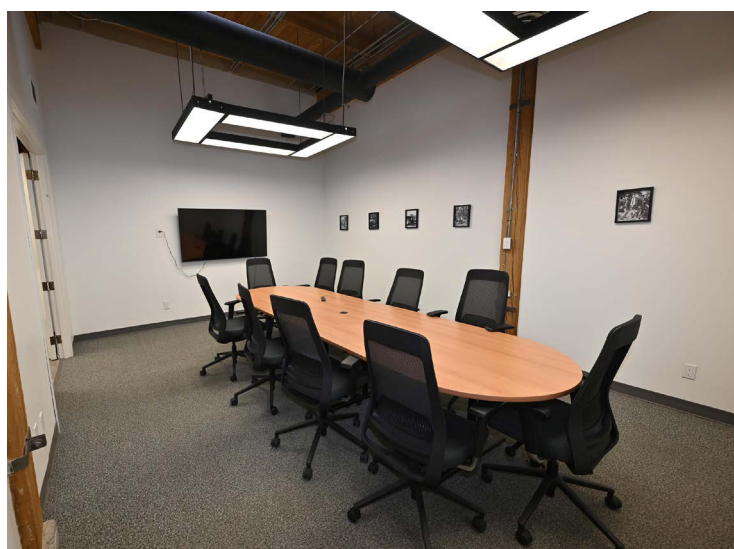
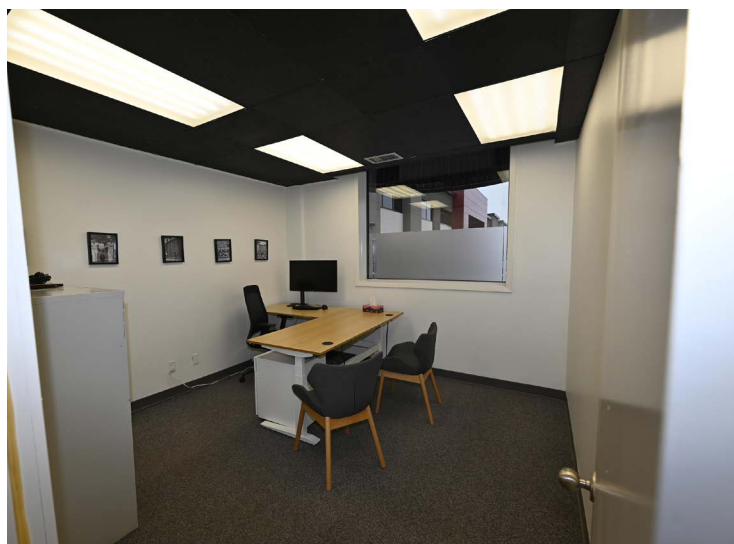
MUNICIPAL ADDRESS	Unit 1, 11302-119 St NW, Edmonton, Alberta
LEGAL DESCRIPTION	Plan: 1743HW; Block: 193; Lot: B
ZONING	IM (Medium Industrial)
TYPE OF SPACE	Office
NEIGHBOURHOOD	Prince Rupert
UNIT 1	2,320 sq ft ±
PARKING	Additional parking available across the street

FINANCIALS

LEASE RATE	\$11.75/sq ft
OPERATING COSTS	\$10.50/sq ft (est. includes taxes, building insurance, property management and utilities)
TERM	Five (5) Years
POSSESSION	Immediate

ADDITIONAL HIGHLIGHTS

- Build out includes reception area, 4 executive offices, large boardroom, open work space, and 2 washrooms
- Move-in ready
- Close proximity to numerous amenities

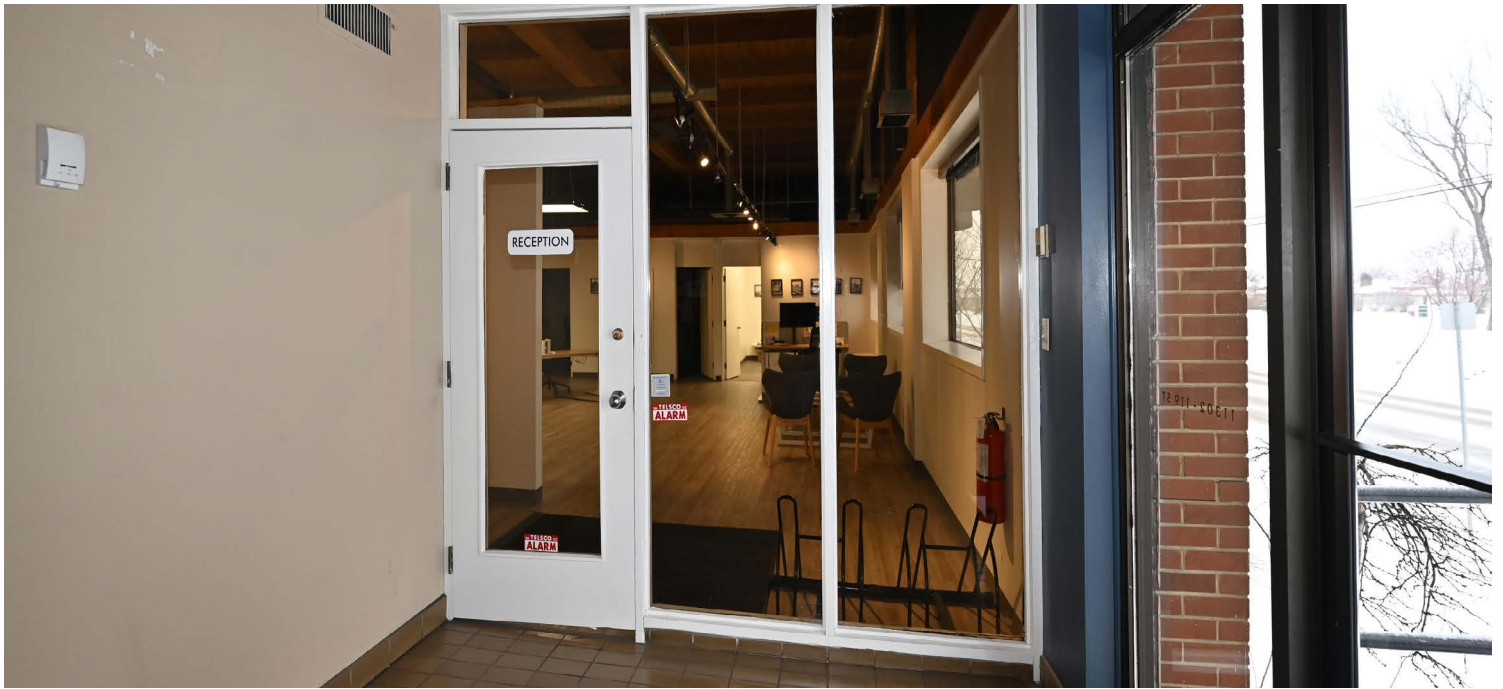


ROYAL PARK
REALTY™

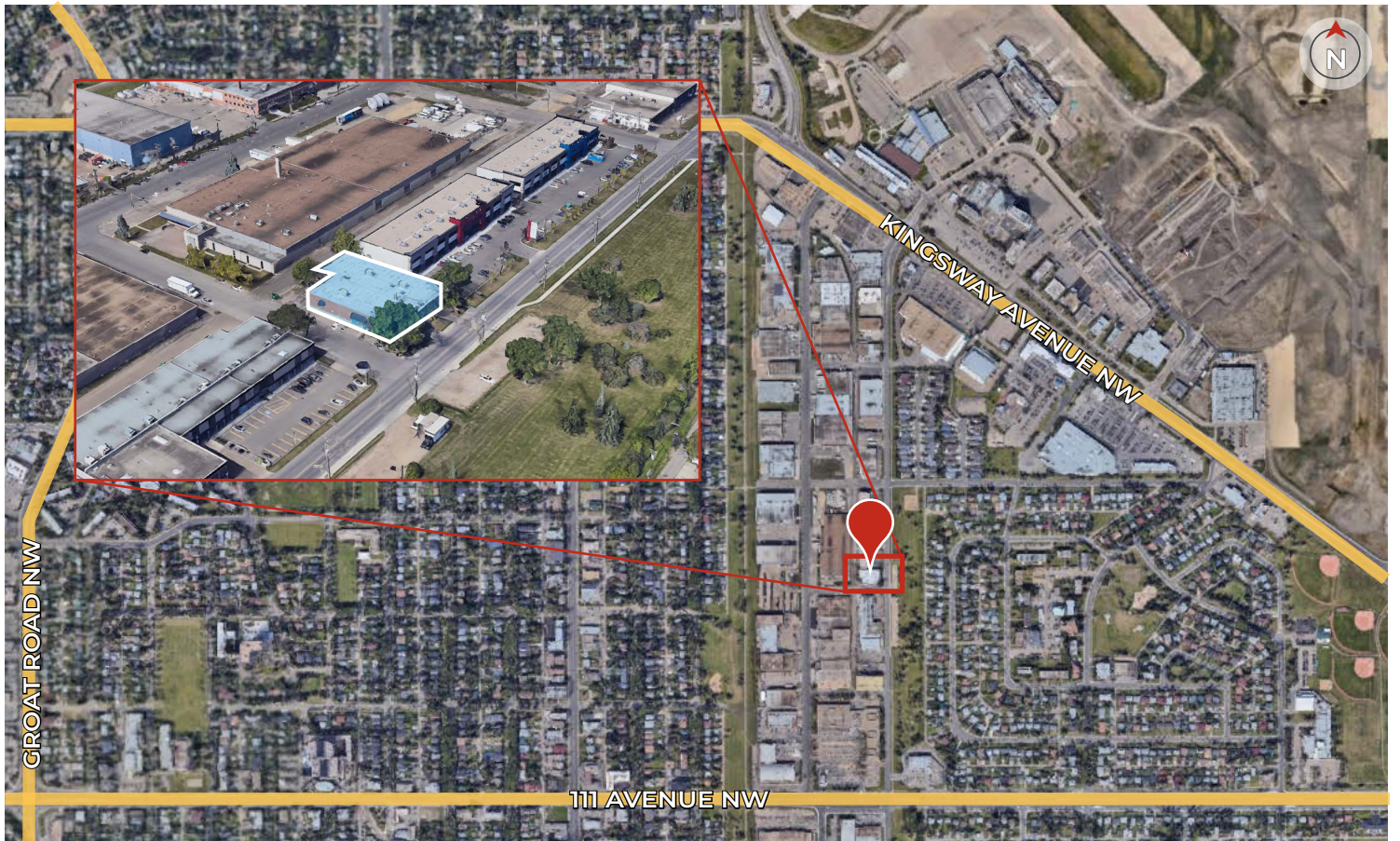
T 780.448.0800 F 780.426.3007
#201, 9038-51 Avenue, Edmonton, AB T6E 5X4

royalparkrealty.com

Character move-in ready office space in central Edmonton



PROPERTY LOCATION



ROYAL PARK
REALTY™

T 780.448.0800 F 780.426.3007
#201, 9038-51 Avenue, Edmonton, AB T6E 5X4

royalparkrealty.com



Quality Based on **Results**, Not **Promises**.

Contact Us For More Information



JOEL WOLSKI

Director, Associate

C 780.904.5630

T 780.423.7599

joel@royalparkrealty.com



SCOTT ENDRES

Partner, Broker

C 780.720.6541

T 780.423.7588

scott@royalparkrealty.com



**ROYAL PARK
REALTY™**

T 780.448.0800 F 780.426.3007
#201, 9038-51 Avenue, Edmonton, AB T6E 5X4

royalparkrealty.com

The information contained herein is believed to be correct, however does not form part of any future contract. The offering may be withdrawn at any time without notice or cause.