

FOR SALE

140.01 ACRES DEVELOPMENT LAND

5835 17 Street SW, Edmonton, AB



HIGHLIGHTS

Royal Park Realty is pleased to offer 140.01 ± acres of development land for sale in southeast Edmonton area. Just south of the new Decoteau ASP. 20 minutes away from South Edmonton Common, this land is perfect for residential development projects. With its close proximity to urban amenities, this land offers a prime investment opportunity, capitalizing on the growth of Edmonton's population.

CONTACT

SCOTT ENDRES

Partner, Broker

☎ 780.720.6541

scott@royalparkrealty.com

JOEL WOLSKI

Director, Associate

☎ 780.904.5630

joel@royalparkrealty.com

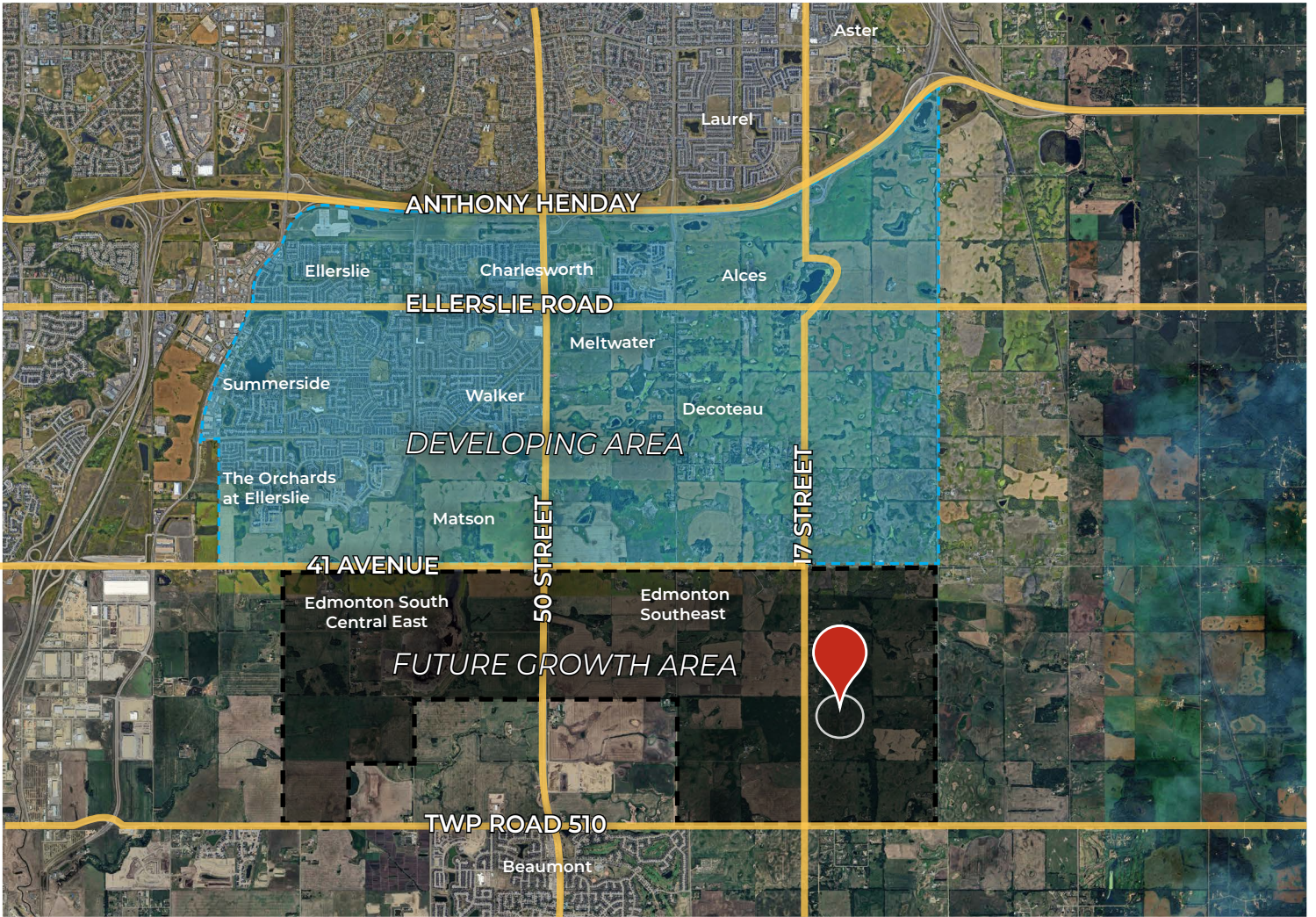


ROYAL PARK
REALTY™

T 780.448.0800 F 780.426.3007
#201, 9038 -51 Avenue NW Edmonton, AB T6E 5X4

royalparkrealty.com

Development Land for Sale | 5835 17 Street SW, Edmonton, AB



PROPERTY DETAILS

MUNICIPAL ADDRESS	5835-17 Street SW, Edmonton, AB
LEGAL DESCRIPTION	NW-5-51-23-4
PLANS IN EFFECT	Decoteau ASP
SITE AREA	140.01 Acres ±
ZONING	AES (Agricultural Edmonton South)
SALE PRICE	\$4,760,340.00 (\$34,000.00/Acre)
POSSESSION	30 days and/or negotiable

Quality Based on *Results*, Not *Promises*.

Contact Us For More Information



SCOTT ENDRES

Partner, Broker

C 780.720.6541

T 780.423.7588

scott@royalparkrealty.com



JOEL WOLSKI

Director, Associate

C 780.904.5630

T 780.423.7599

joel@royalparkrealty.com



ROYAL PARK
REALTY™

T 780.448.0800 **F** 780.426.3007
#201, 9038 -51 Avenue NW Edmonton, AB T6E 5X4

royalparkrealty.com