

FOR SALE

PALISADES ON THE RAVINE CONDO

#216, 500 Palisades Way, Sherwood Park, AB



Second Floor Corner Unit

Experience incredible value in this gorgeous corner unit at Palisades on the Ravine. Ideally located in one of Sherwood Park's most desirable communities, just steps from Centennial Park, this bright and spacious condo offers stunning sunsets and peaceful park views. The open concept layout features large windows that fill the home with natural light, while the modern kitchen boasts granite countertops, a large island and stainless steel appliances. Built with concrete construction for enhanced sound-proofing and durability, this air-conditioned suite includes two titled parking stalls and storage cage. The primary bedroom offers a walk in closet and 3-piece ensuite, while the second bedroom and full 4-piece bath are perfect for guests. Additional highlights include fireplace, in-suite laundry, two balconies with a gas line for BBQ, and convenient access to public transit, walking trails, the Anthony Henday, and Shoppes at Emerald Hills.

TYLER WEIMAN, SIOR

Partner, Associate

C 780.995.0028

tyler@royalparkrealty.com



ROYAL PARK
REALTY™

T 780.448.0800 F 780.426.3007
#201, 9083 51 Avenue NW Edmonton, AB T6E 5X4

royalparkrealty.com

The information contained herein is believed to be correct, however does not form part of any future contract. The offering may be withdrawn at any time without notice or cause.

For Sale | Palisades on the Ravine Condo, Sherwood Park, AB



Additional Details

- Six appliances included: washer/dryer, fridge, stove, microwave and dishwasher
- Furniture included in the sale: couch, TV stand, 2 TV's, reclining chair, coffee table, 2 end tables, accent table, queen bed with headboard, 2 dressers, 2 night tables, lamp, kitchen table with 5 chairs, and miscellaneous decorative accents
- Residents enjoy access to a fully equipped gym and a common lounge area featuring a pool table, poker and card tables and a full kitchen - perfect for hosting gatherings and events

Property Details & Financials

MUNICIPAL ADDRESS #216, 500 Palisades Way,
Sherwood Park, AB

LEGAL DESCRIPTION Condominium Plan: 1020591;
Unit: 228

TWO TITLED PARKING STALLS Condominium Plan: 1020591;
Units: 345 & 360

YEAR BUILT 2009

SIZE 1,113 sq ft ±

BEDROOMS 2

BATHROOMS 2

SALE PRICE **\$449,000.00**

CONDO FEES \$736.47/month (2025) (Includes heat, common area insurance, janitorial (common areas), landscaping/snow removal, property management, Reserve Fund Contribution, water/sewer, and exterior maintenance)

PROPERTY TAXES \$2,274.65/yr (2025)

POSSESSION Immediate



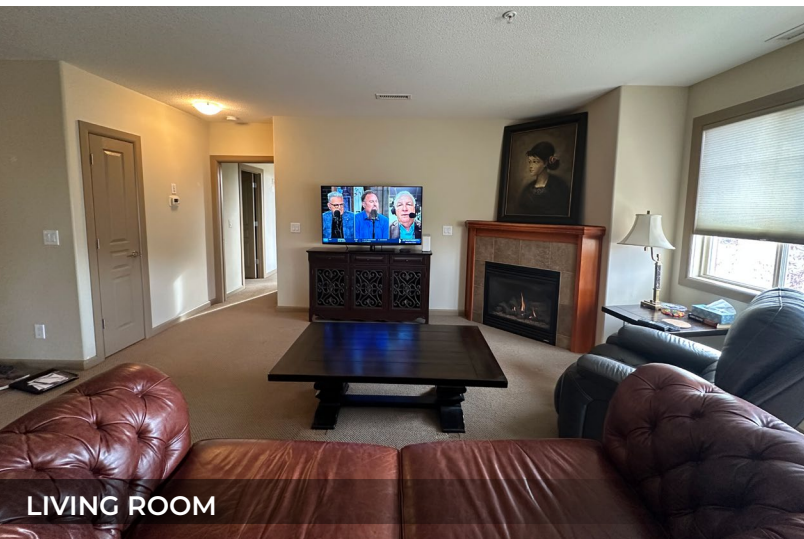
**ROYAL PARK
REALTY™**

T 780.448.0800 F 780.426.3007
#201, 9083 51 Avenue NW Edmonton, AB T6E 5X4

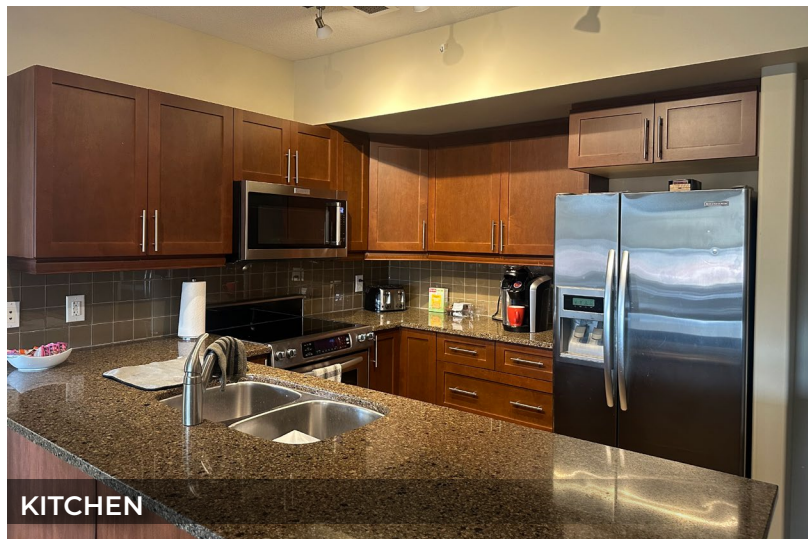
royalparkrealty.com

The information contained herein is believed to be correct, however does not form part of any future contract. The offering may be withdrawn at any time without notice or cause.

For Sale | Palisades on the Ravine Condo, Sherwood Park, AB



LIVING ROOM



KITCHEN



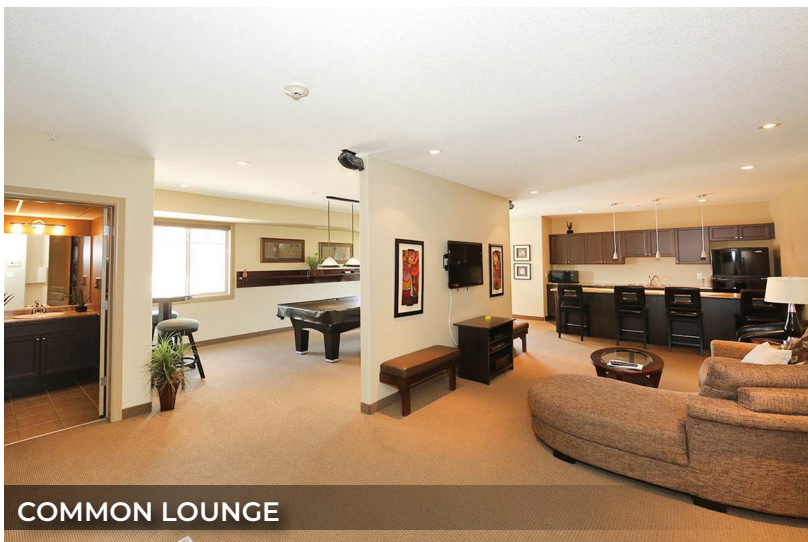
OPEN CONCEPT KITCHEN



DINING AREA



FULLY EQUIPPED GYM



COMMON LOUNGE



ROYAL PARK
REALTY™

T 780.448.0800 F 780.426.3007
#201, 9083 51 Avenue NW Edmonton, AB T6E 5X4

royalparkrealty.com

The information contained herein is believed to be correct, however does not form part of any future contract. The offering may be withdrawn at any time without notice or cause.

For Sale | Palisades on the Ravine Condo, Sherwood Park, AB



SECOND BEDROOM



PRIMARY BEDROOM



UTILITY/LAUNDRY ROOM



4-PIECE BATHROOM



**ROYAL PARK
REALTY™**

T 780.448.0800 F 780.426.3007
#201, 9083 51 Avenue NW Edmonton, AB T6E 5X4

royalparkrealty.com

The information contained herein is believed to be correct, however does not form part of any future contract. The offering may be withdrawn at any time without notice or cause.



ROYAL PARK
REALTY™

T 780.448.0800 F 780.426.3007
#201, 9083 51 Avenue NW Edmonton, AB T6E 5X4

royalparkrealty.com

Floor Plan



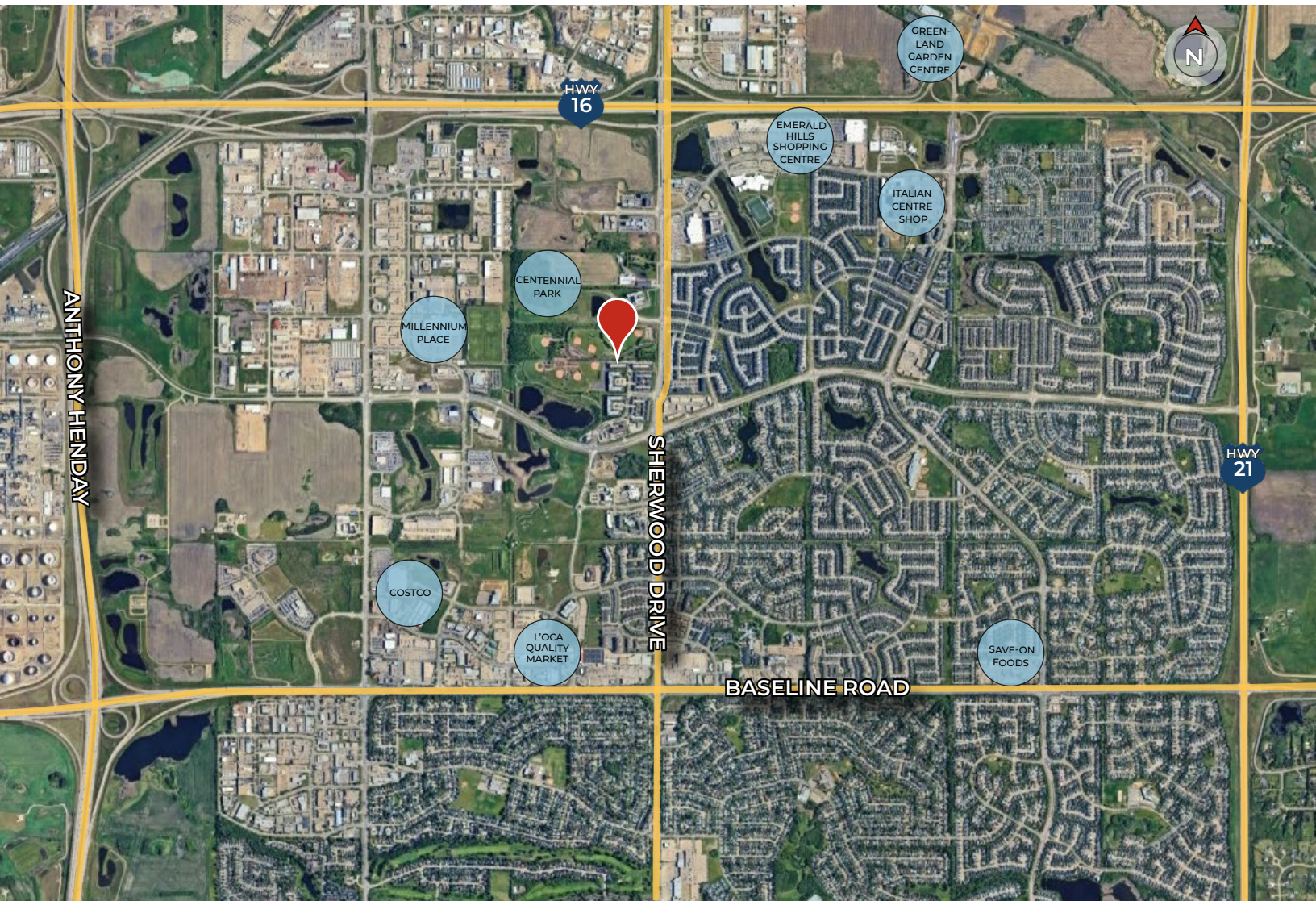
ROYAL PARK
REALTY™

T 780.448.0800 F 780.426.3007
#201, 9083 51 Avenue NW Edmonton, AB T6E 5X4

royalparkrealty.com

The information contained herein is believed to be correct, however does not form part of any future contract. The offering may be withdrawn at any time without notice or cause.

Property Location | Palisades on the Ravine Condo, Sherwood Park, AB



Contact Our Team:



TYLER WEIMAN, Sior

Partner, Associate

780.995.0028

tyler@royalparkrealty.com



JOANNA LEWIS

Associate

780.423.7580

joanna@royalparkrealty.com



**ROYAL PARK
REALTY™**

T 780.448.0800 F 780.426.3007
#201, 9083 51 Avenue NW Edmonton, AB T6E 5X4

royalparkrealty.com

The information contained herein is believed to be correct, however does not form part of any future contract. The offering may be withdrawn at any time without notice or cause.